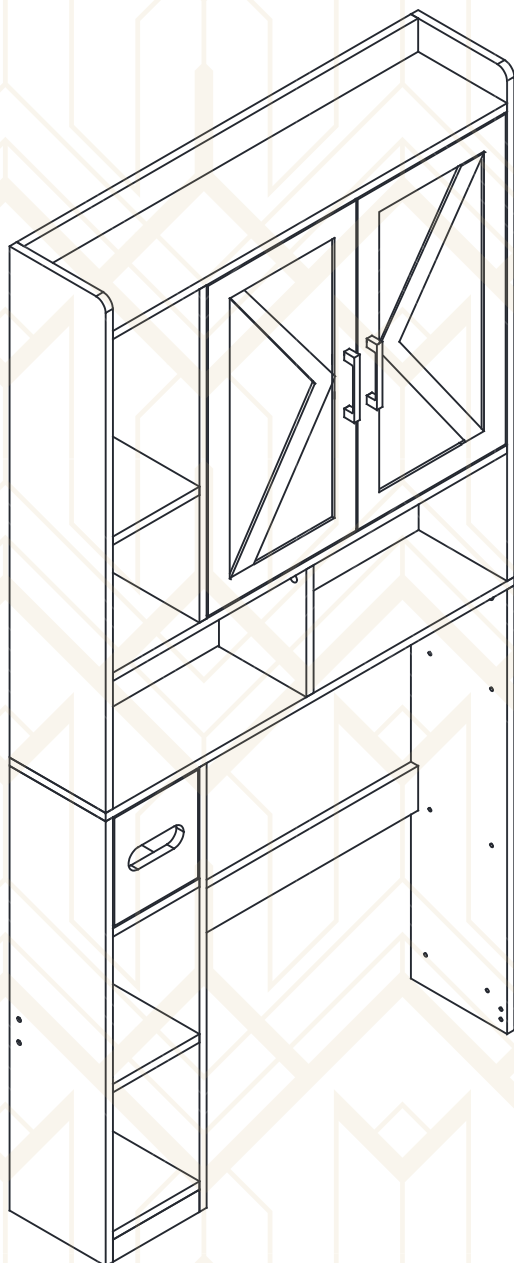
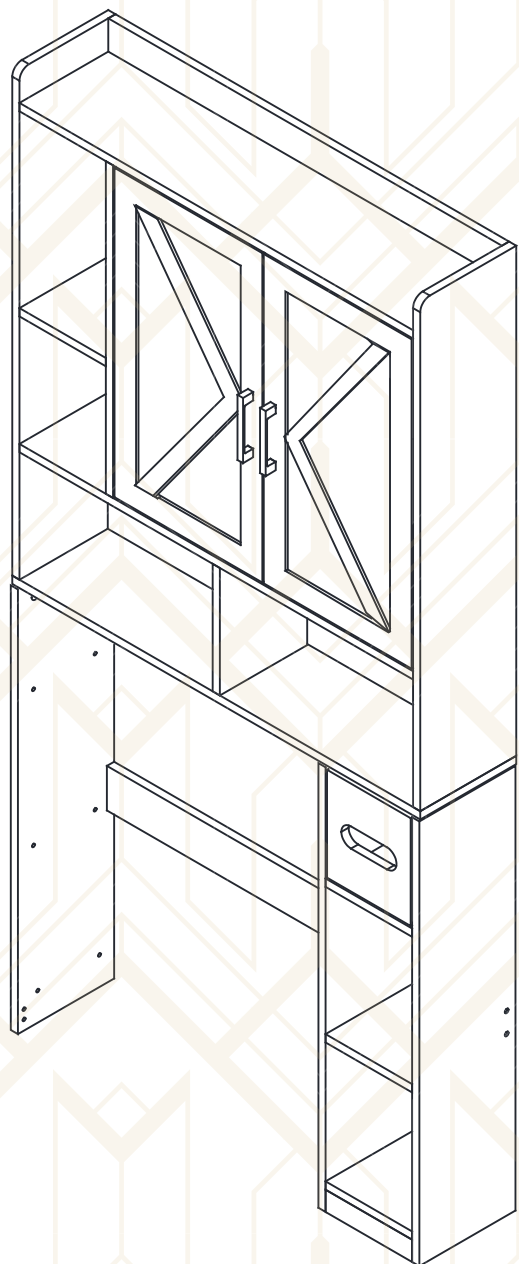


viroformo

INSTRUCTION APPLIES TO
VF-OT001-White / RBrown



OR



Cabinet on the left lower side.
Steps refer to 13-17.

Cabinet on the right lower side.
Steps refer to 19-23.



Thanks for choosing our products.

Please read through the instructions below to familiarize yourself with the parts and steps before assembly.

If you discover any damage upon receipt of your package, please contact our after-sales mailbox immediately at **[support @viroformo.com](mailto:support@viroformo.com)** with clear photos.

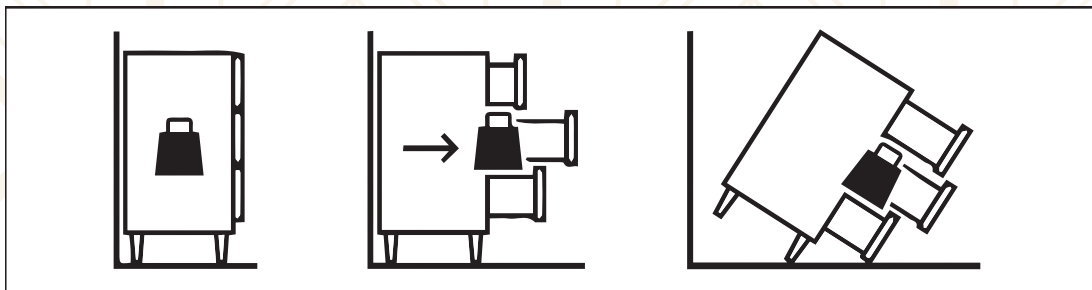
And pls check our YouTube channel (VIROFORMO) for step-by-step installation instruction videos.

support@viroformo.com



ASSEMBLY
VIDEO TUTORIAL

viroformo



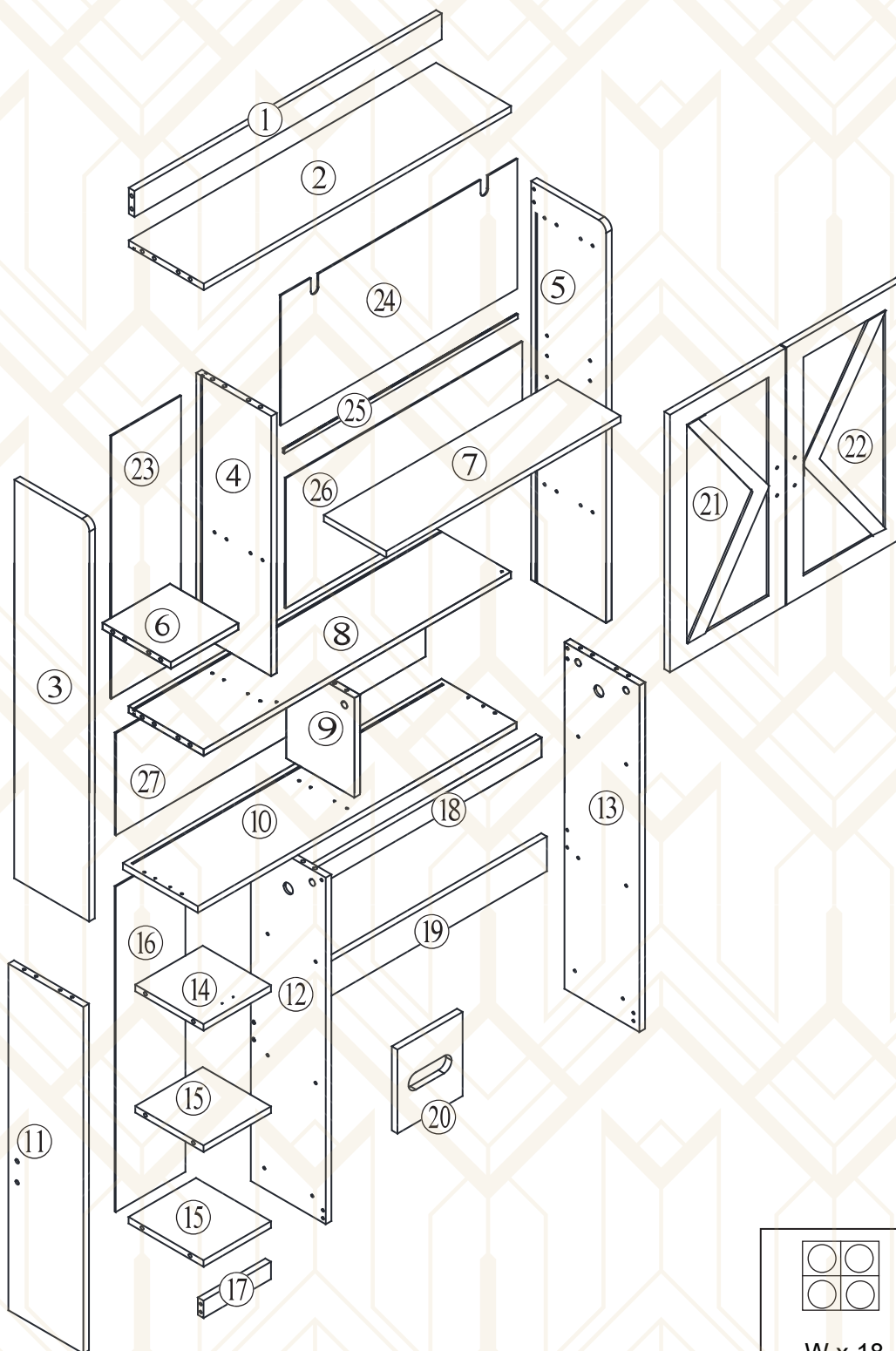
APPROXIMATE ASSEMBLY TIME

2 PEOPLE REQUIRED

THE USE OF ELECTRIC DRILLS IS PROHIBITED

WARNING

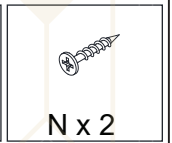
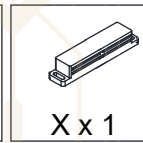
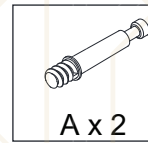
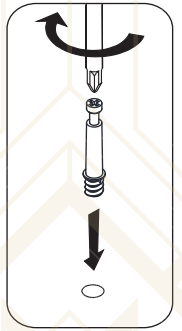
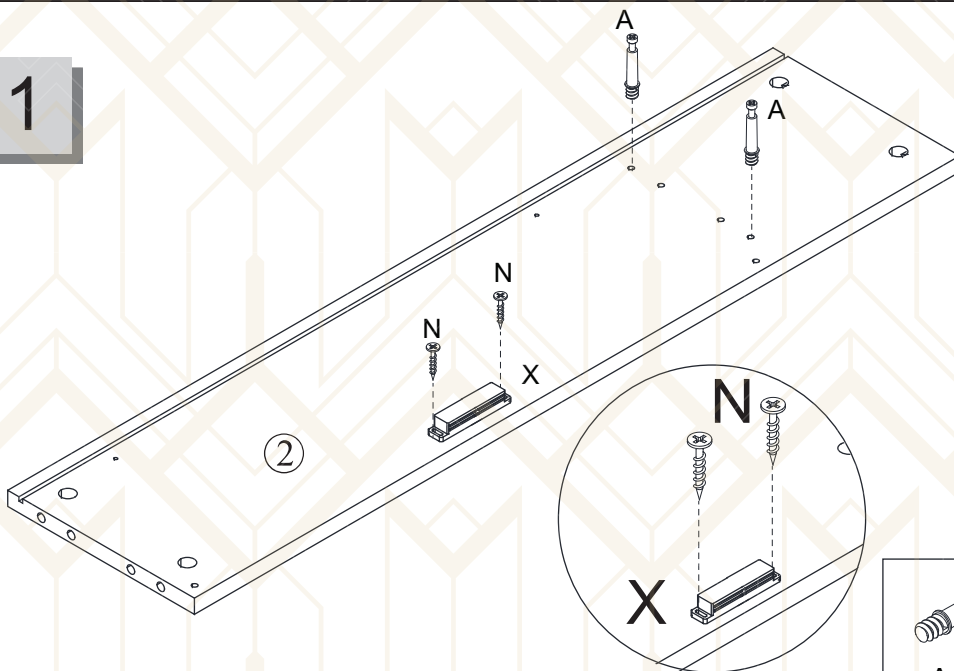
Keep all hardware parts and packaging out of reach of small children, and please do not over-tighten the screws to avoid cracking of the products. Never let children and pets climb or play with the product for safety reasons, keep children and pets away from the assembly process. Please do not use an electric drill during installation.



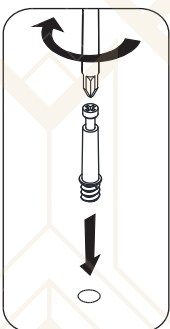
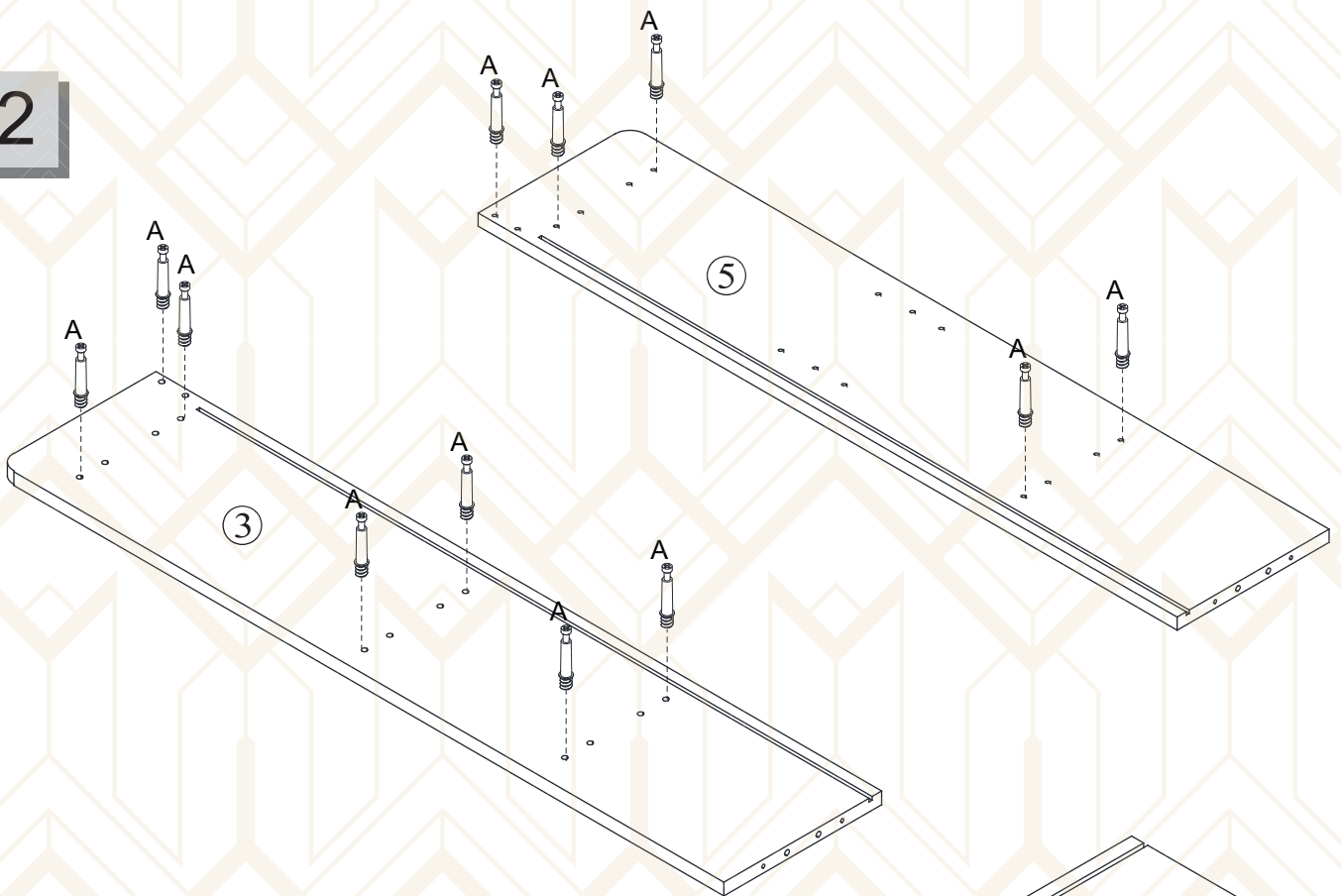
W x 18	X x 1

A x 38	B x 38	C x 38	D x 10	E x 4	F x 2	G x 4
H x 4	J x 3	K x 1	L x 6	M x 15	N x 4	O x 4
P x 1	Q x 2	R x 2	S x 2	T x 1	U x 12	V x 12

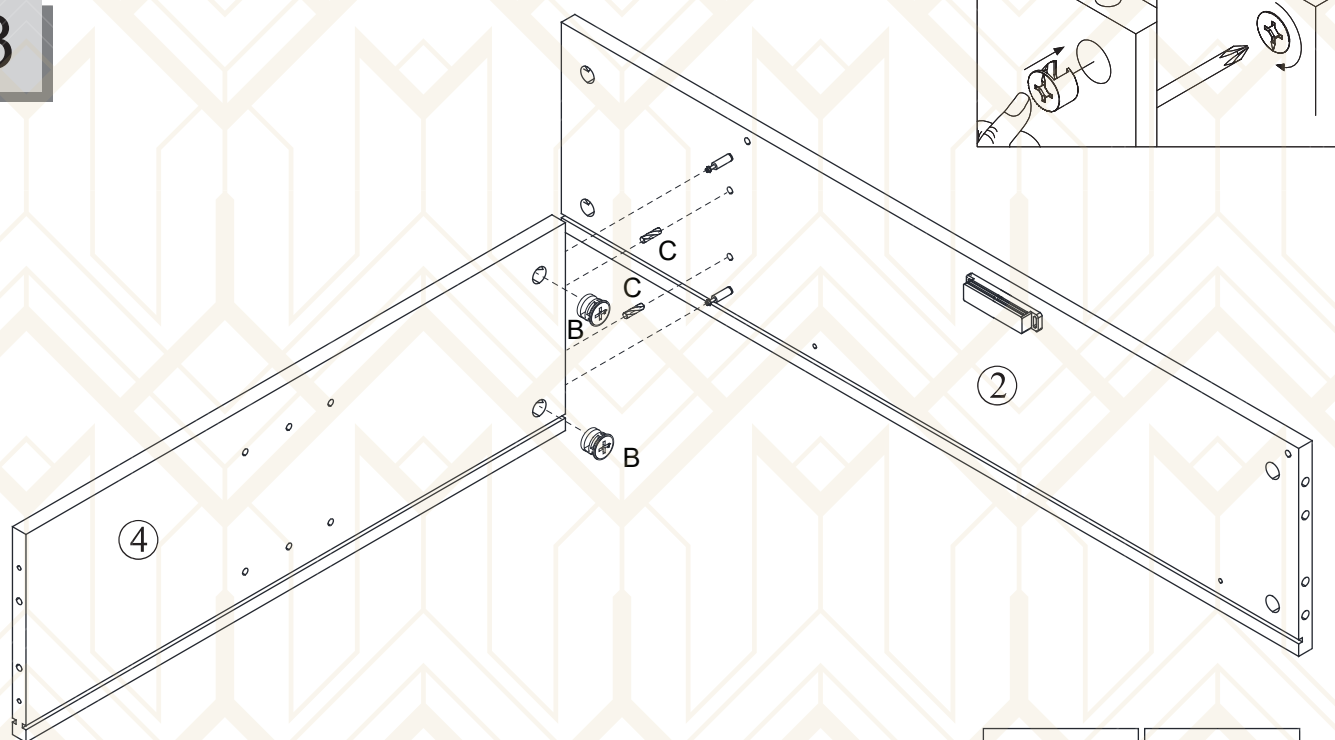
1



2



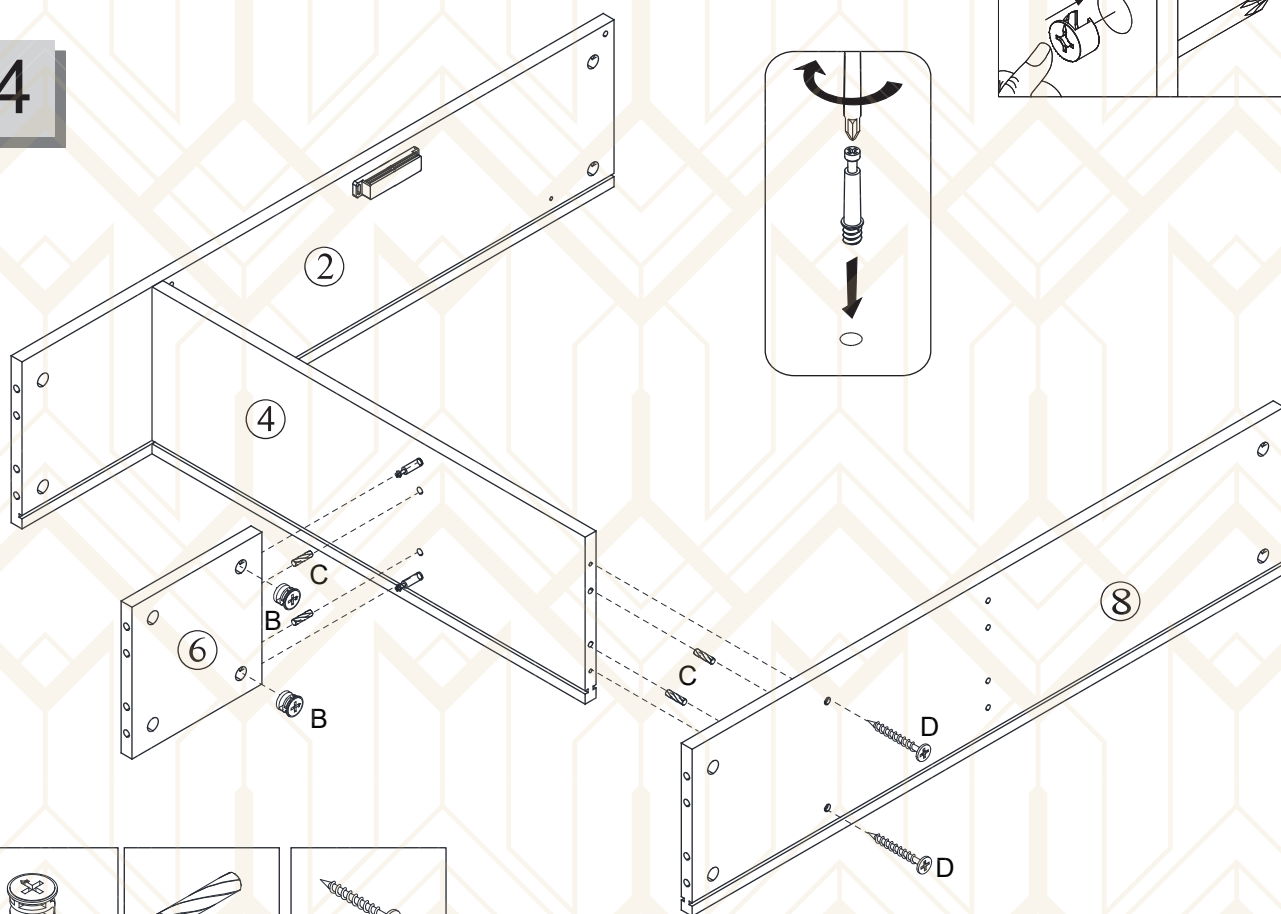
3



B x 2

C x 2

4



B x 2



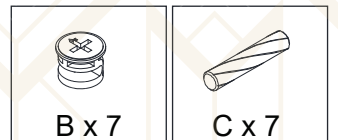
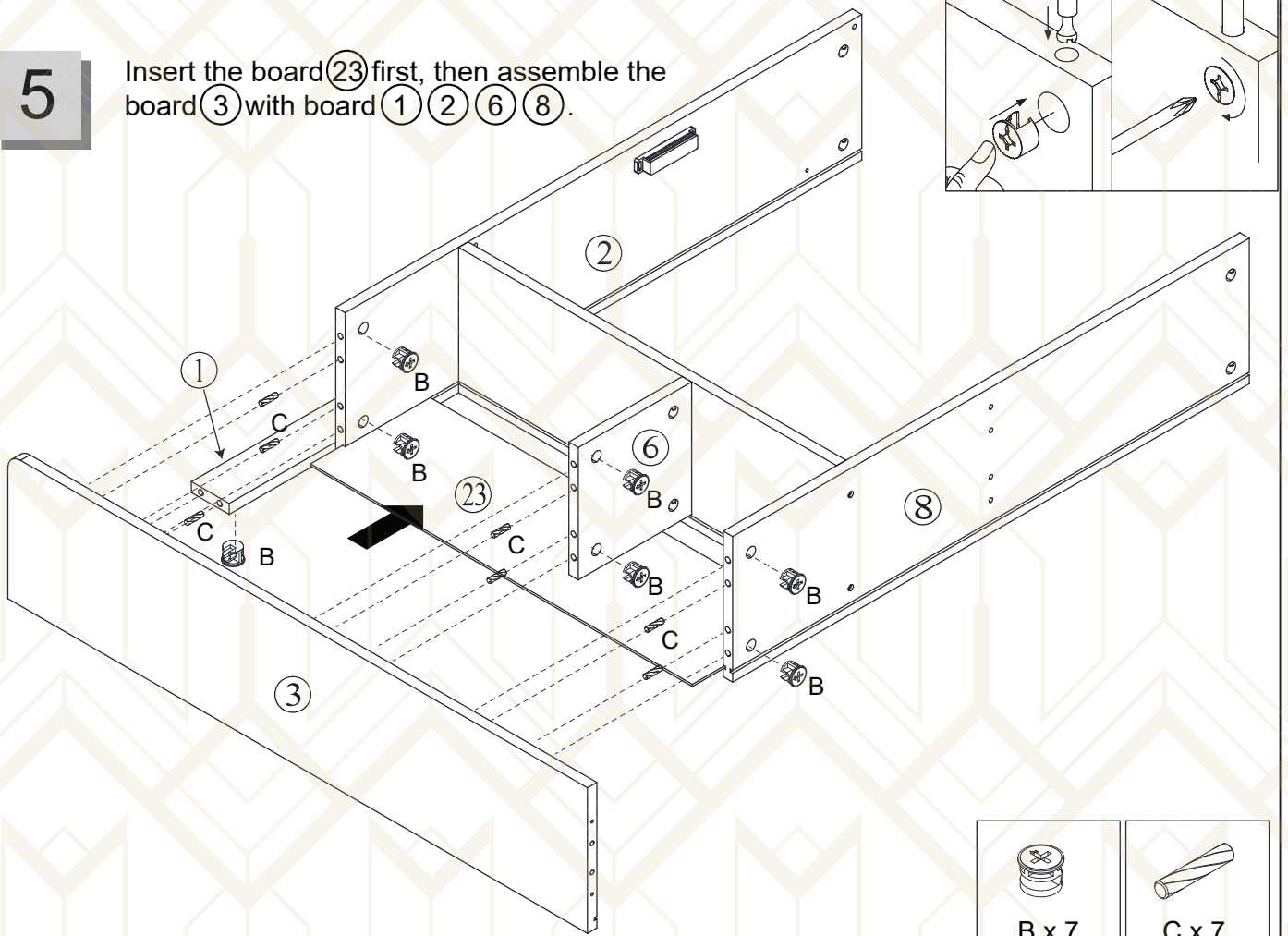
C x 4



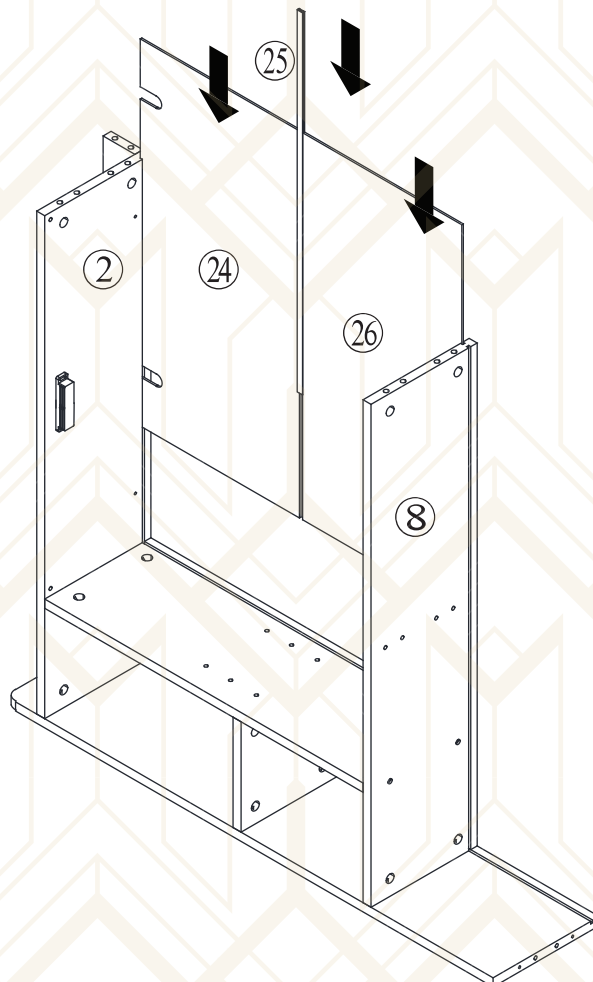
D x 2

5

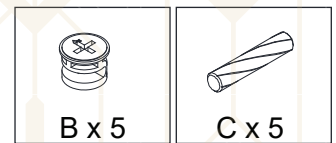
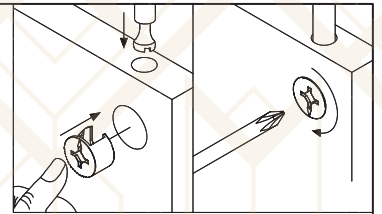
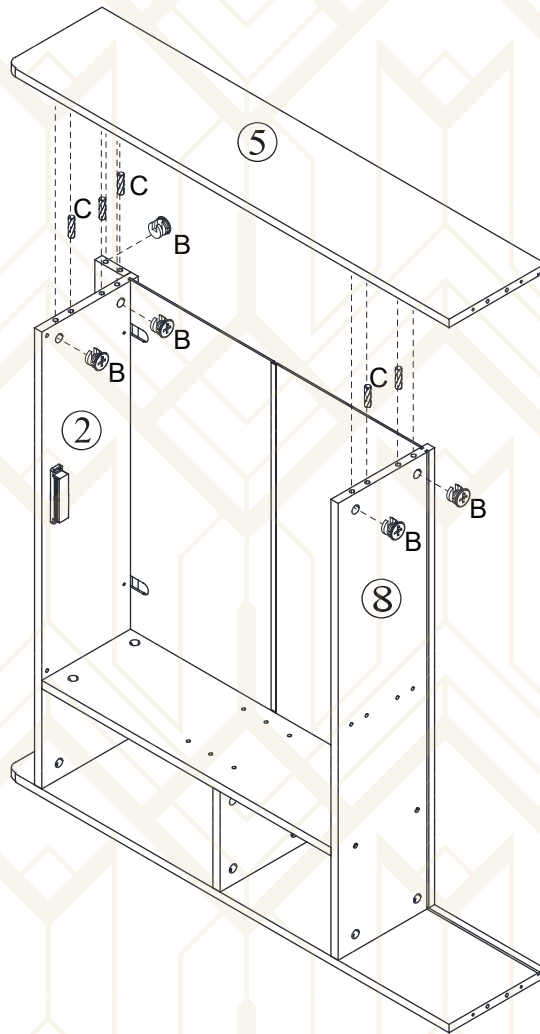
Insert the board (23) first, then assemble the board (3) with board (1) (2) (6) (8).



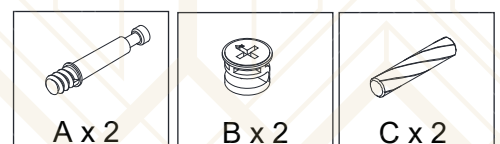
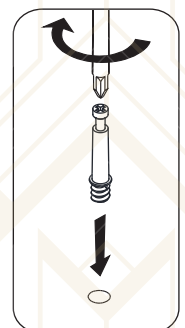
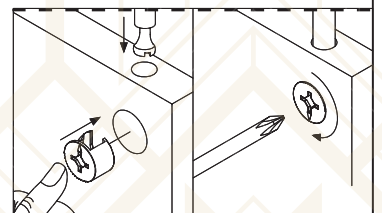
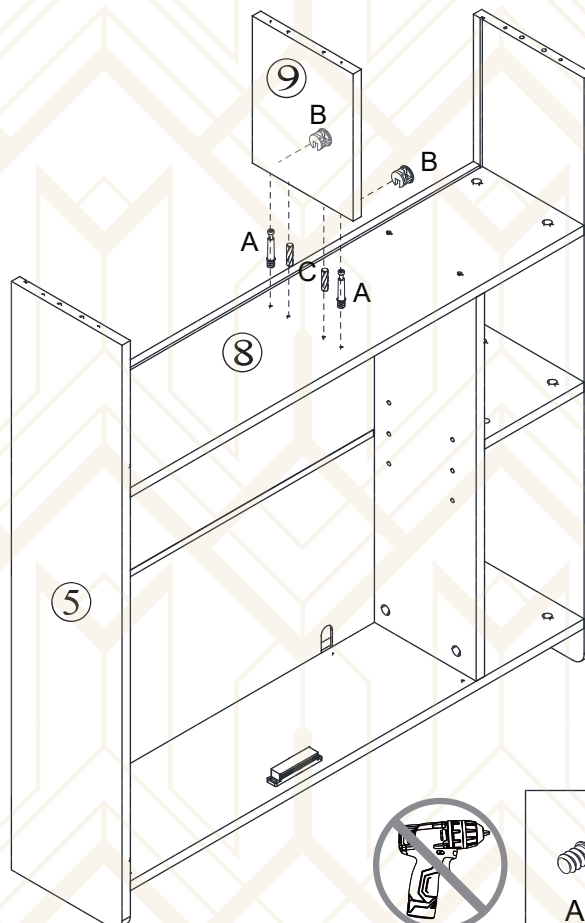
6



7

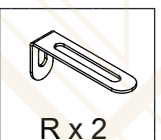
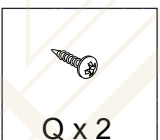
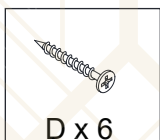
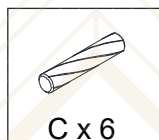
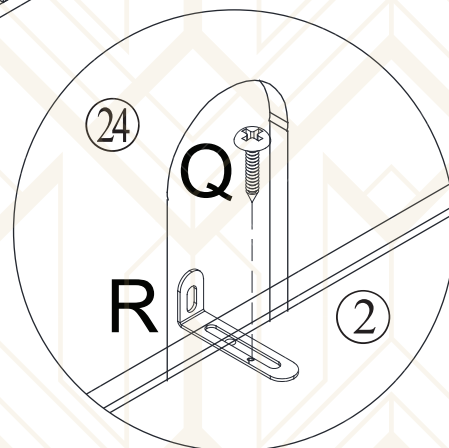
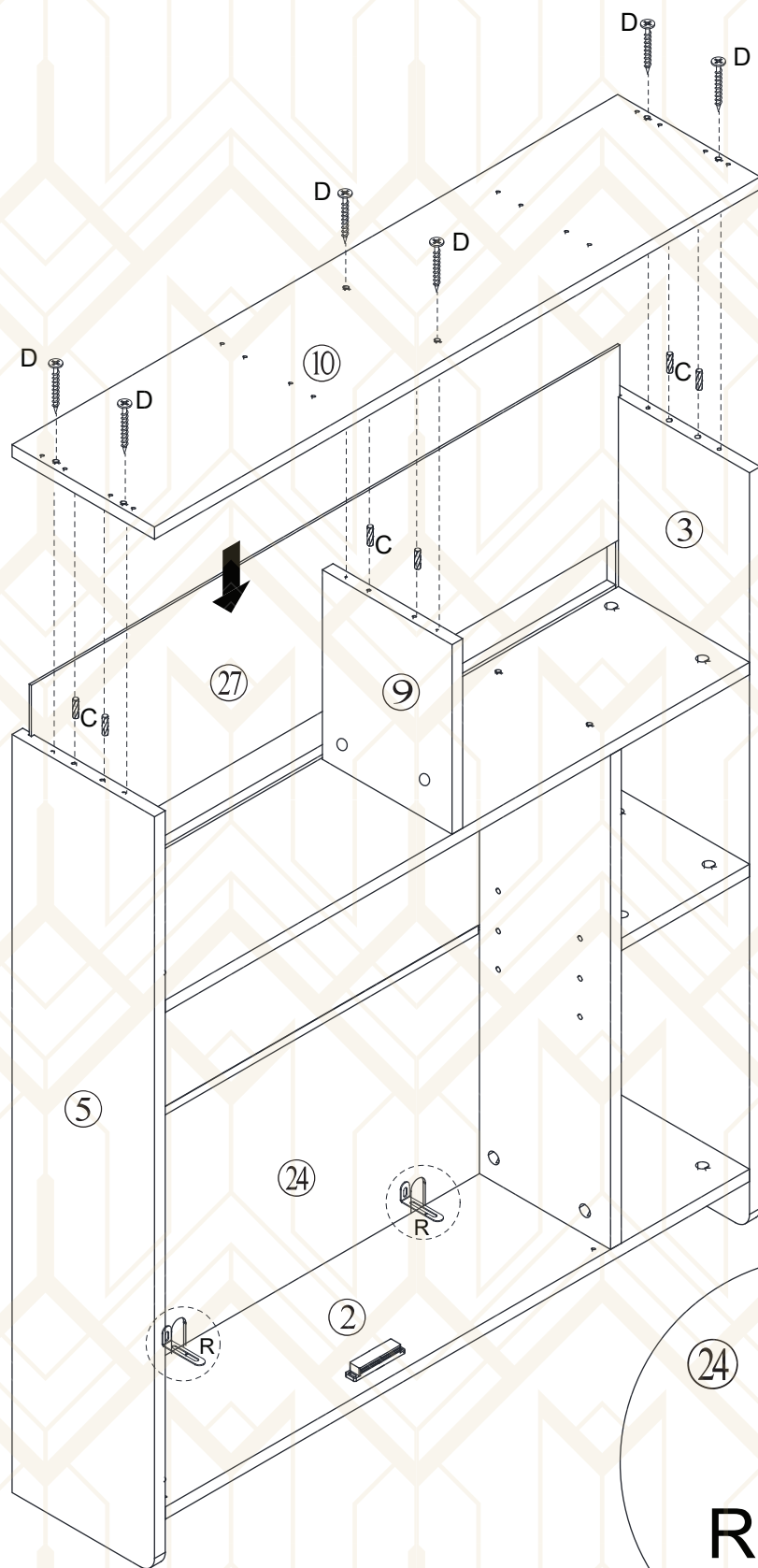


8



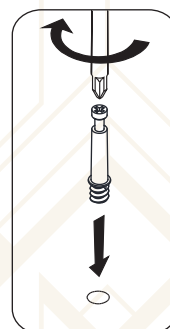
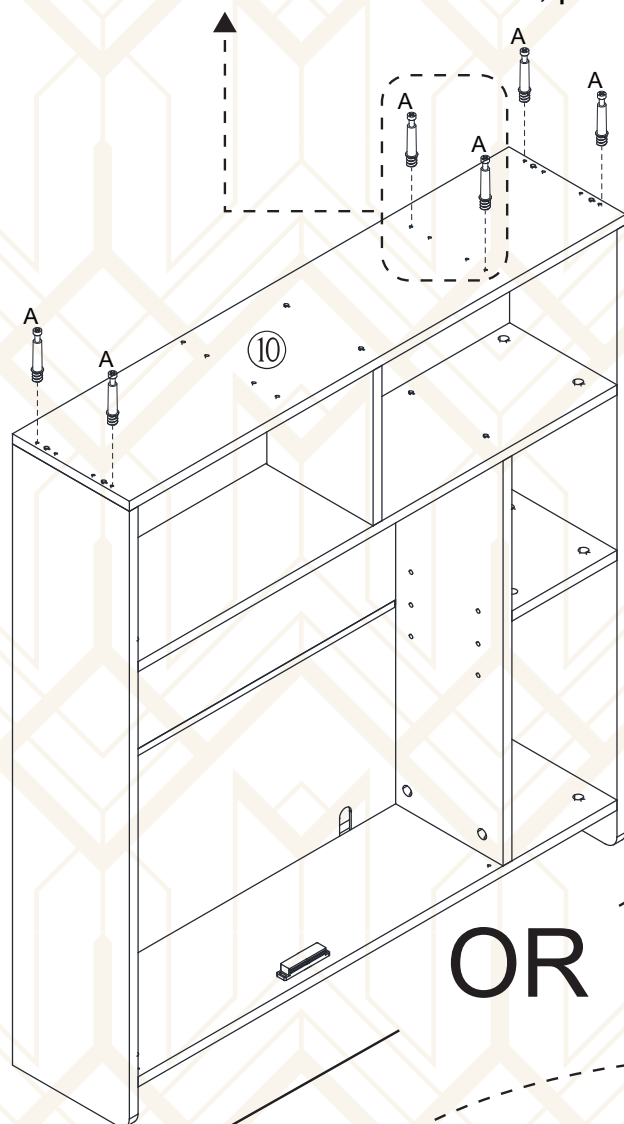
9

Insert the board (27) first, then assemble the board (10) with board (5) (9) (3).

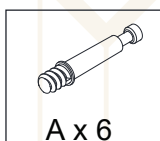
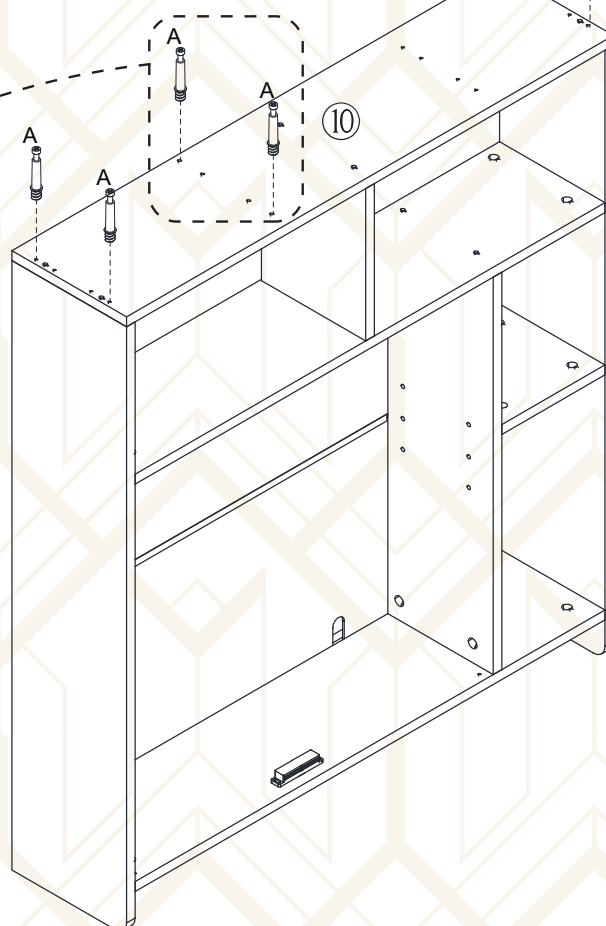


10

Notice: Cabinet on the left lower side, please install A*2 screws at this position.

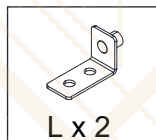
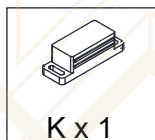
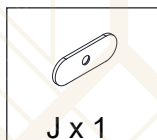
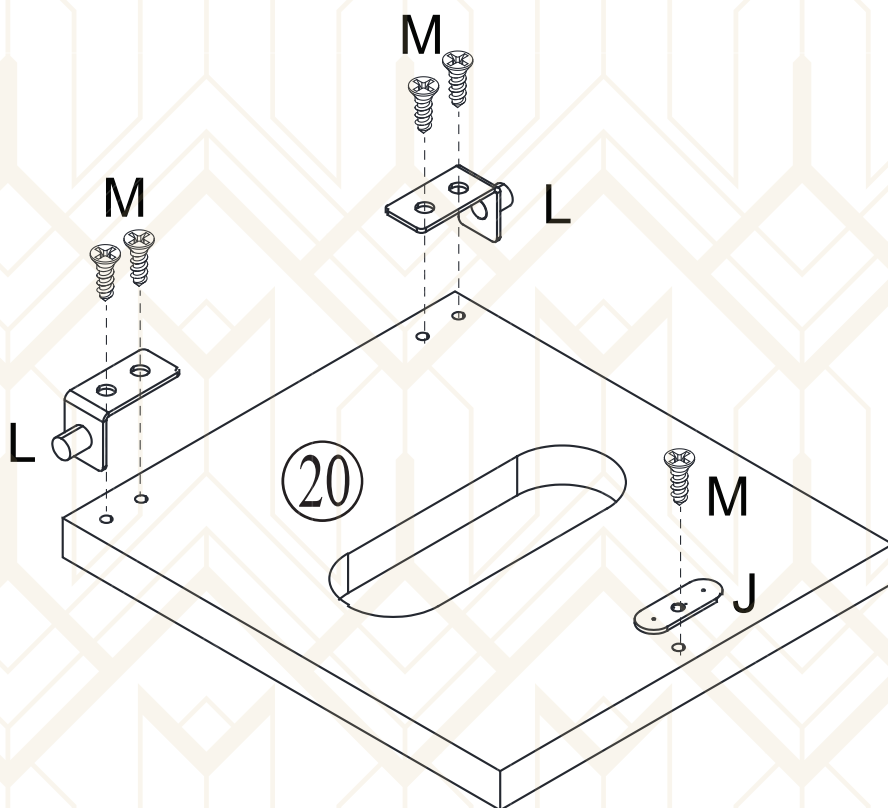
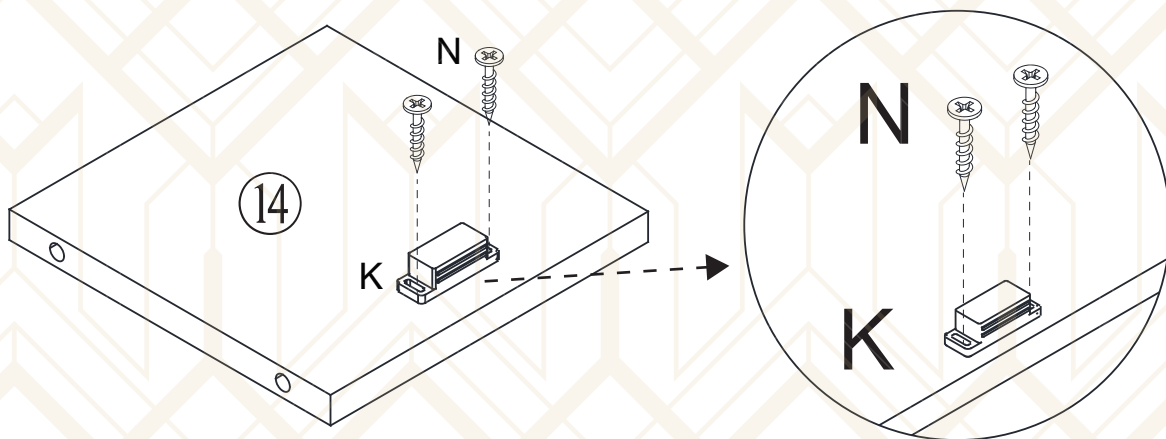


OR



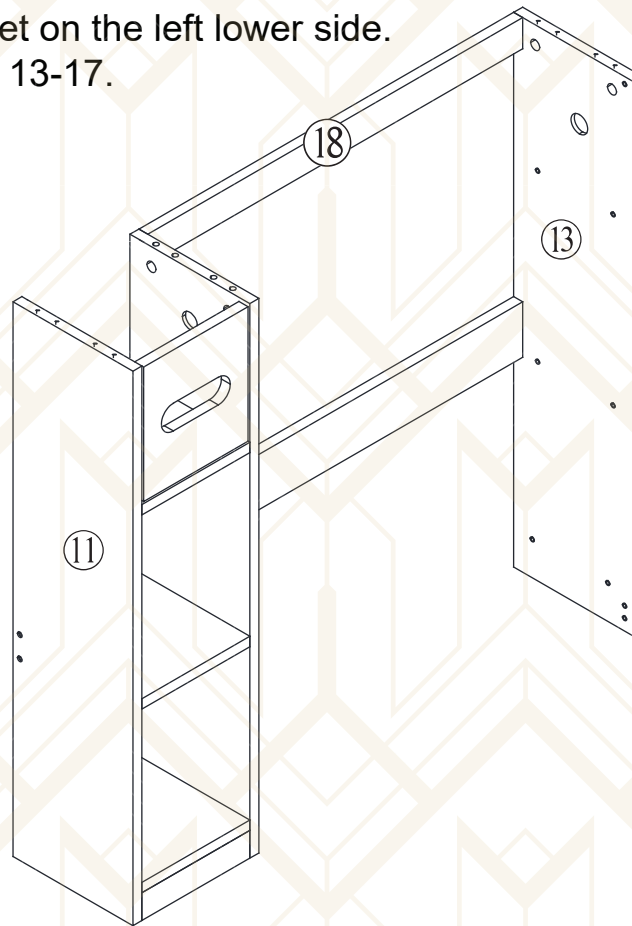
Notice: Cabinet on the right lower side please install A*2 screws at this position.

11

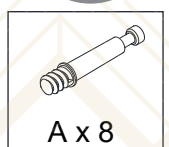
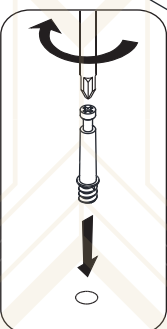
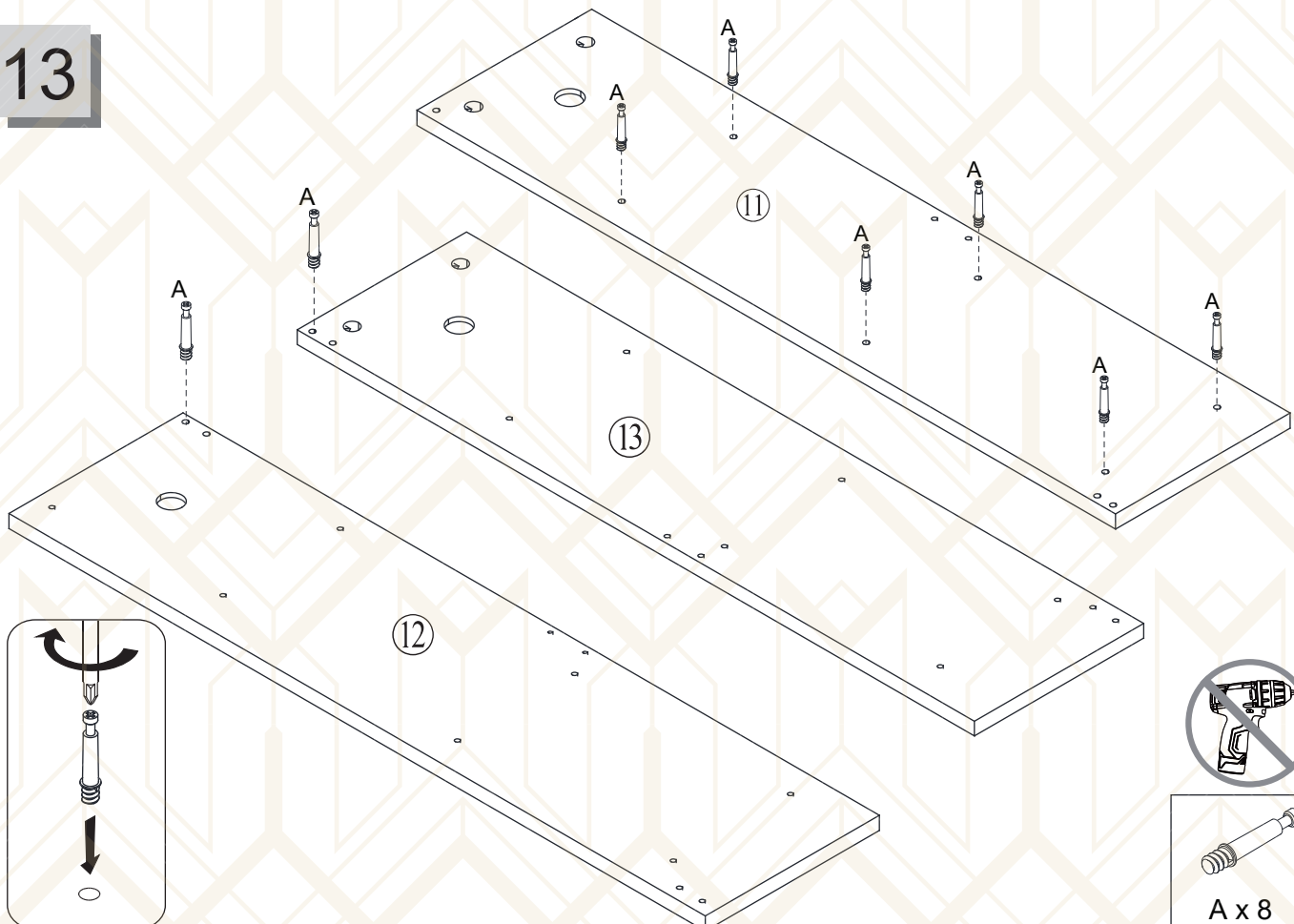


12

Notice: Cabinet on the left lower side.
Steps refer to 13-17.

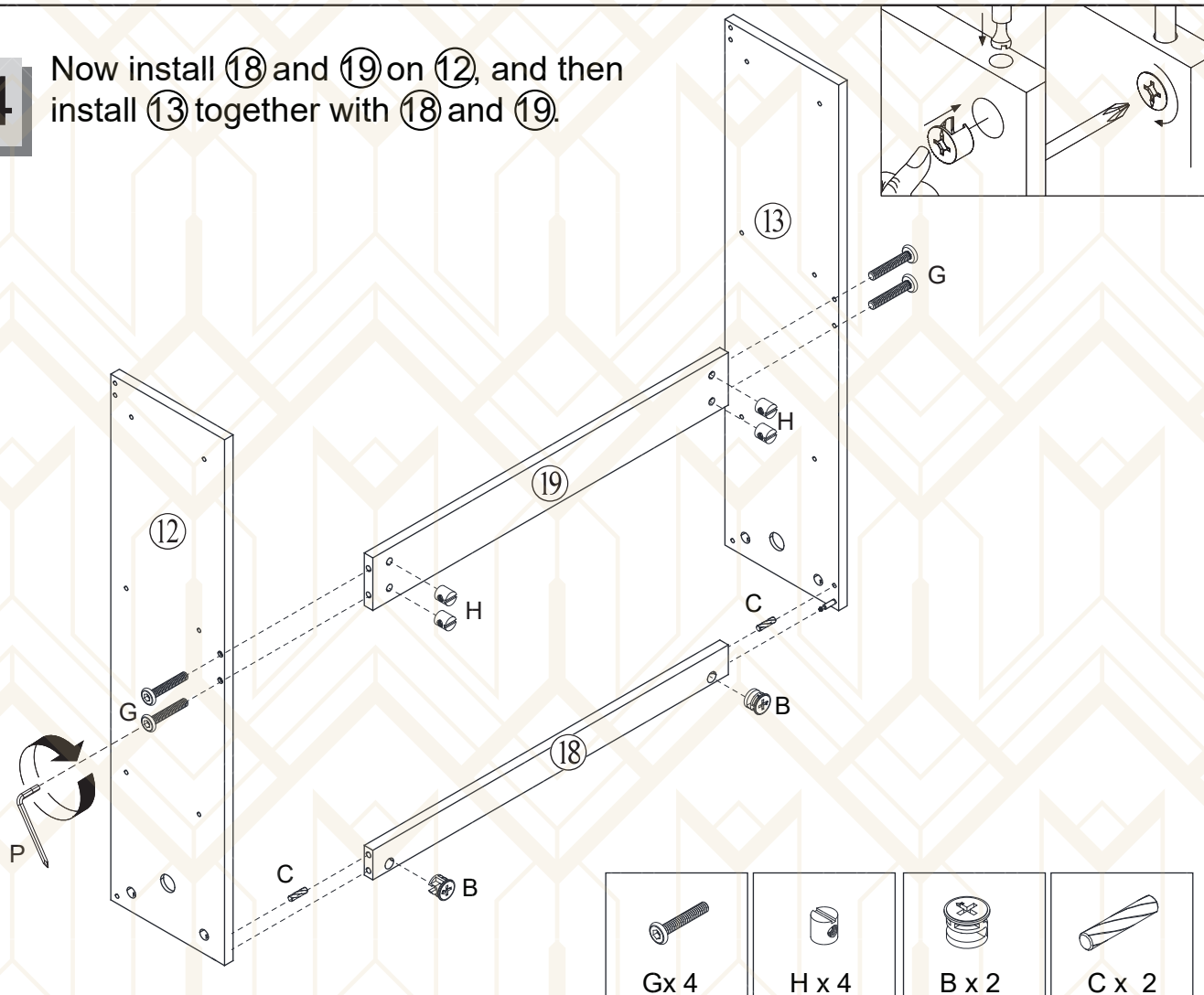


13

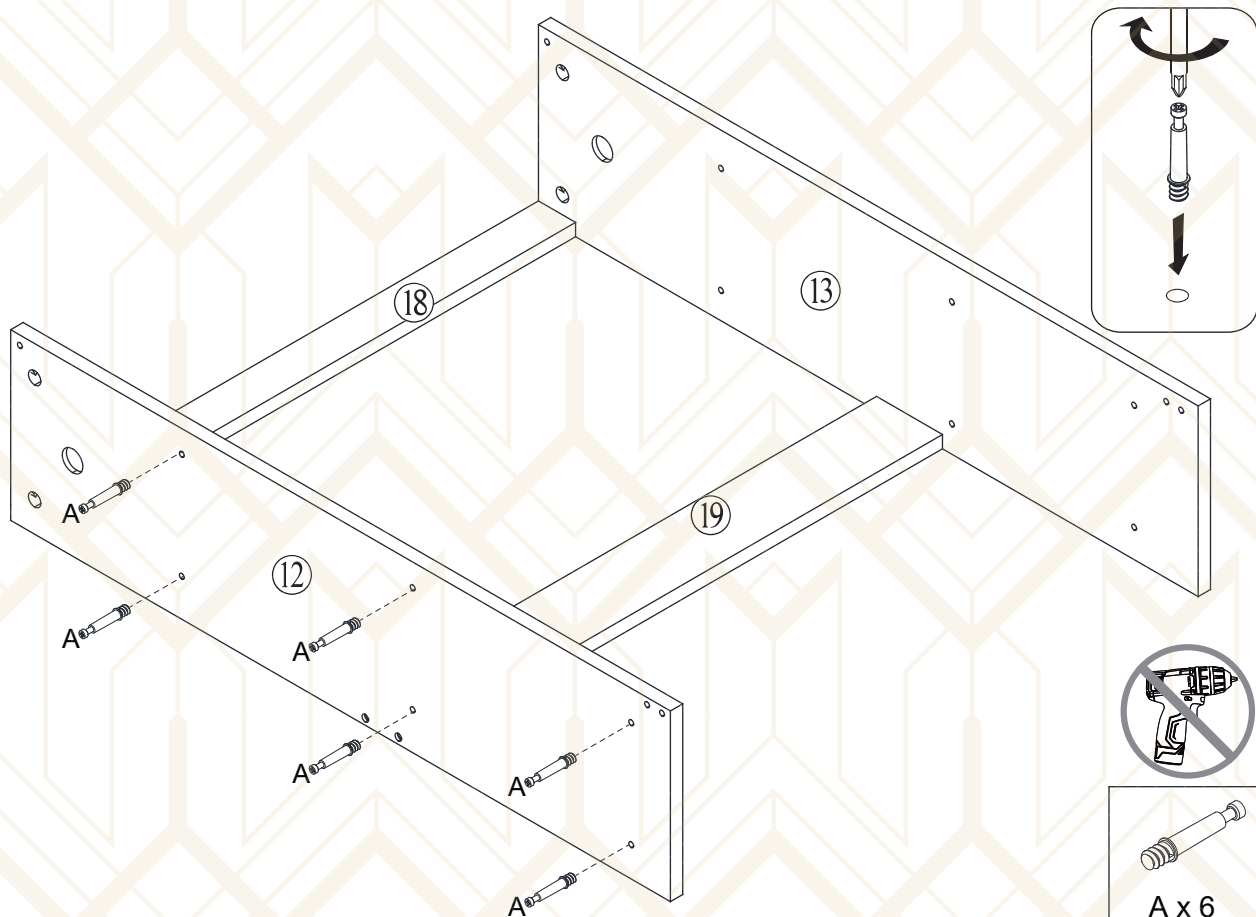


14

Now install ⑱ and ⑲ on ⑫, and then install ⑬ together with ⑱ and ⑲.

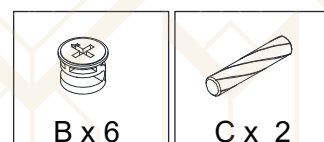
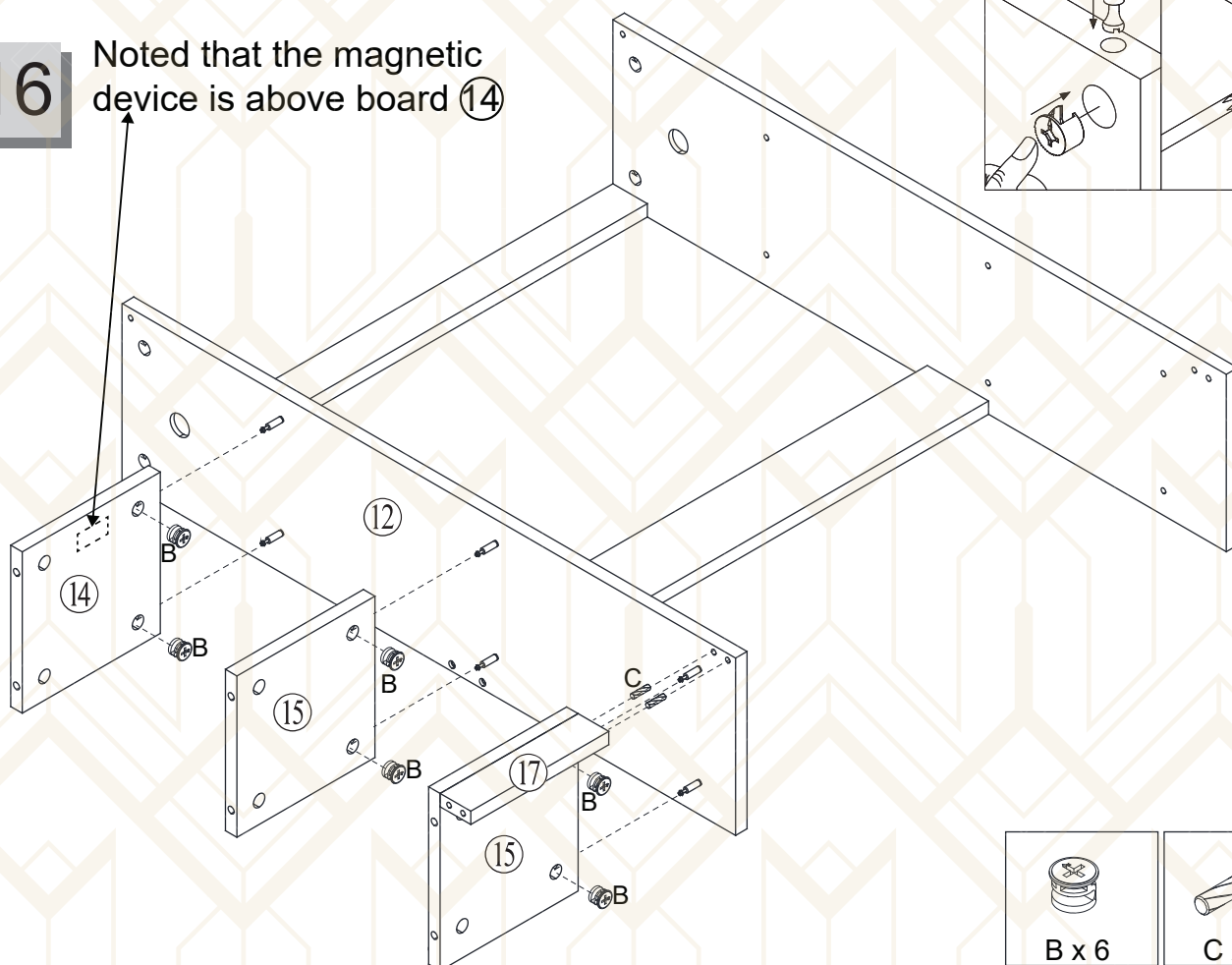


15

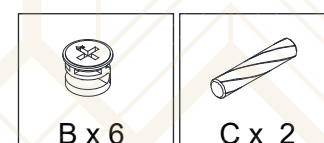
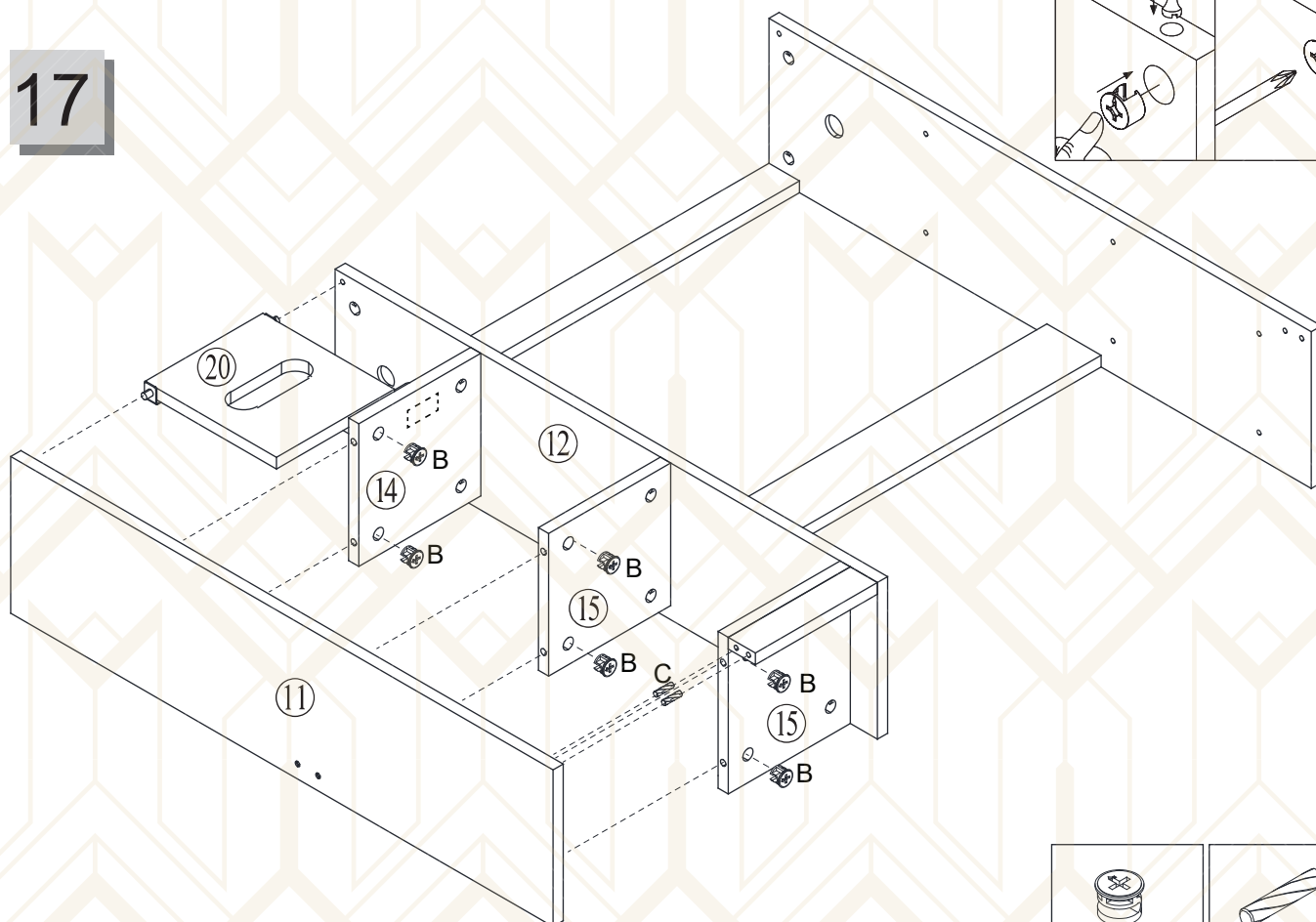


16

Noted that the magnetic device is above board 14

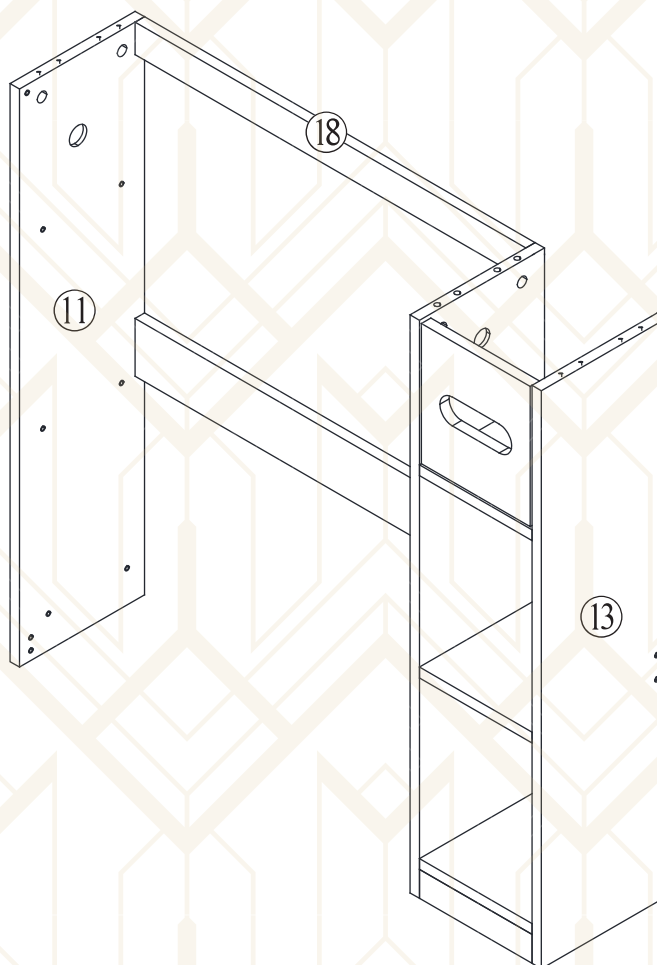


17

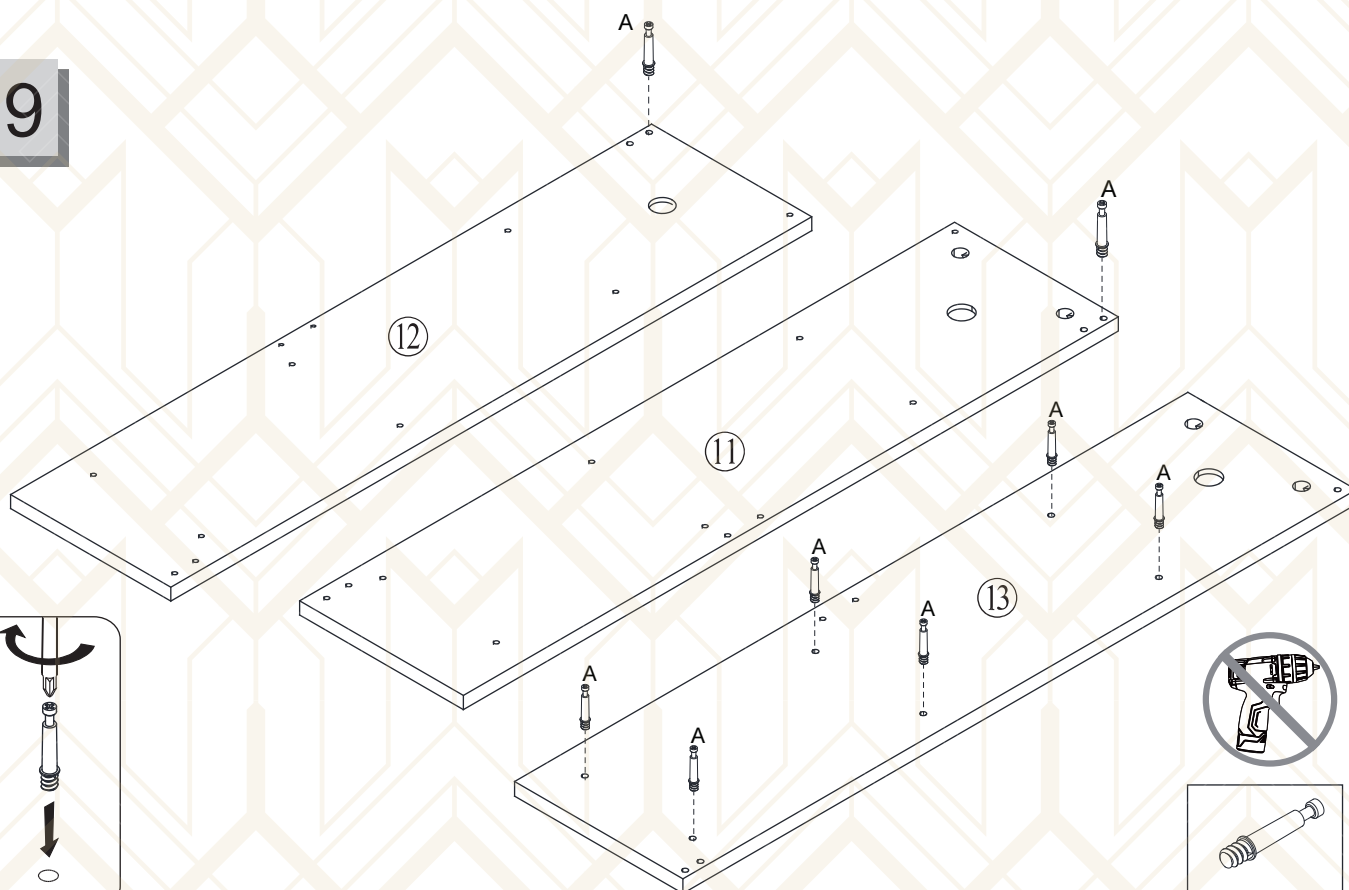


18

Notice: Cabinet on the right lower side.
Steps refer to 19-23.

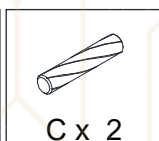
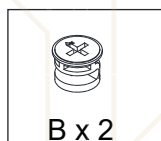
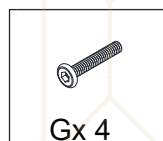
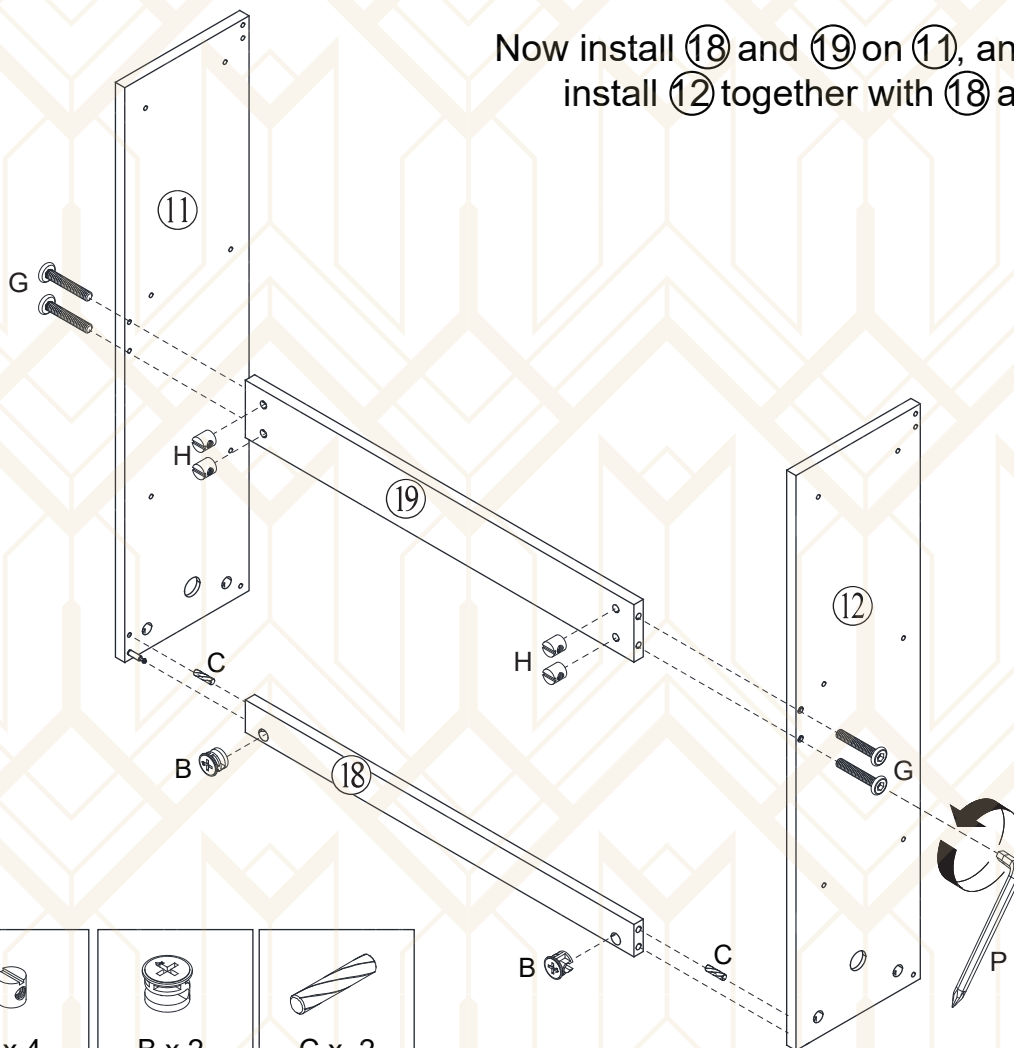


19

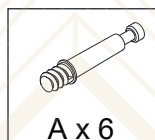
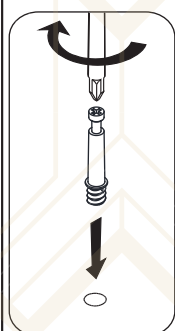
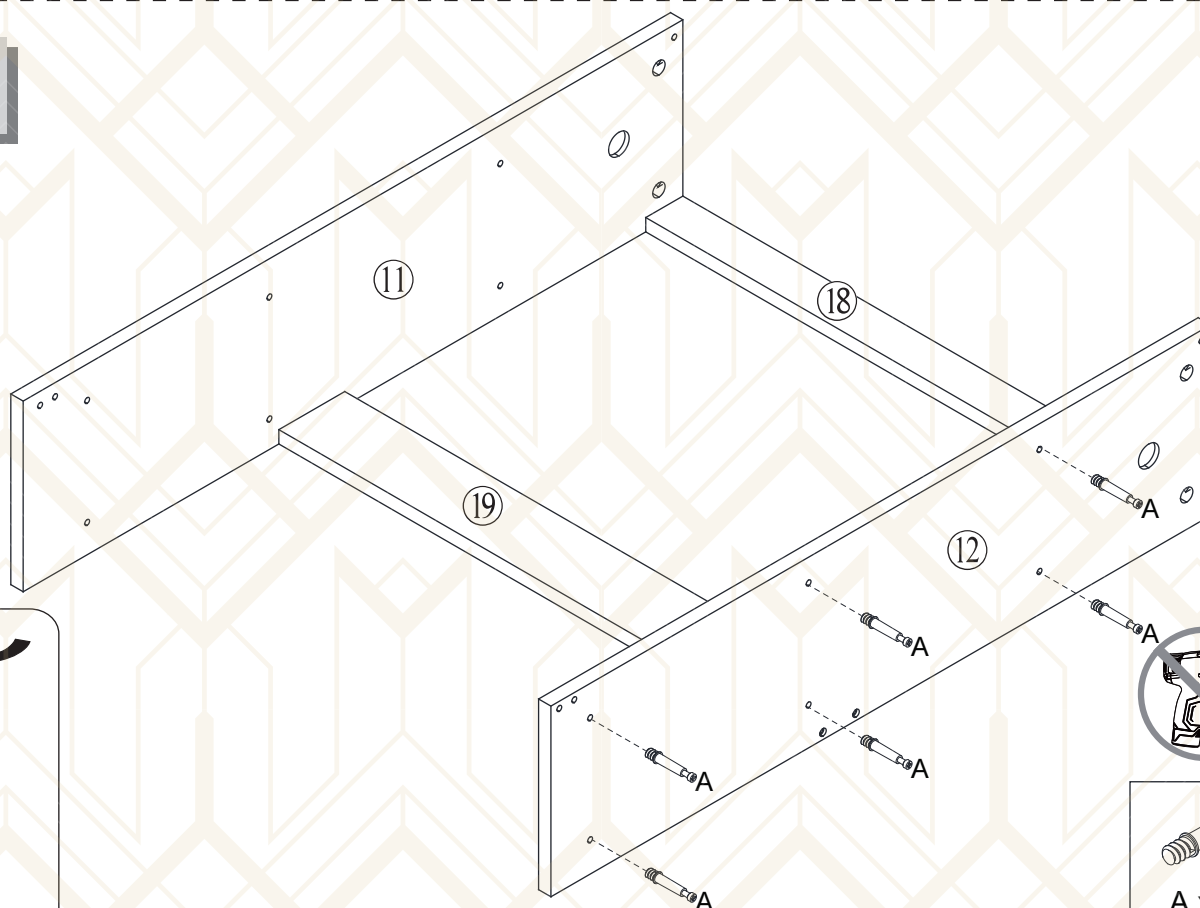


20

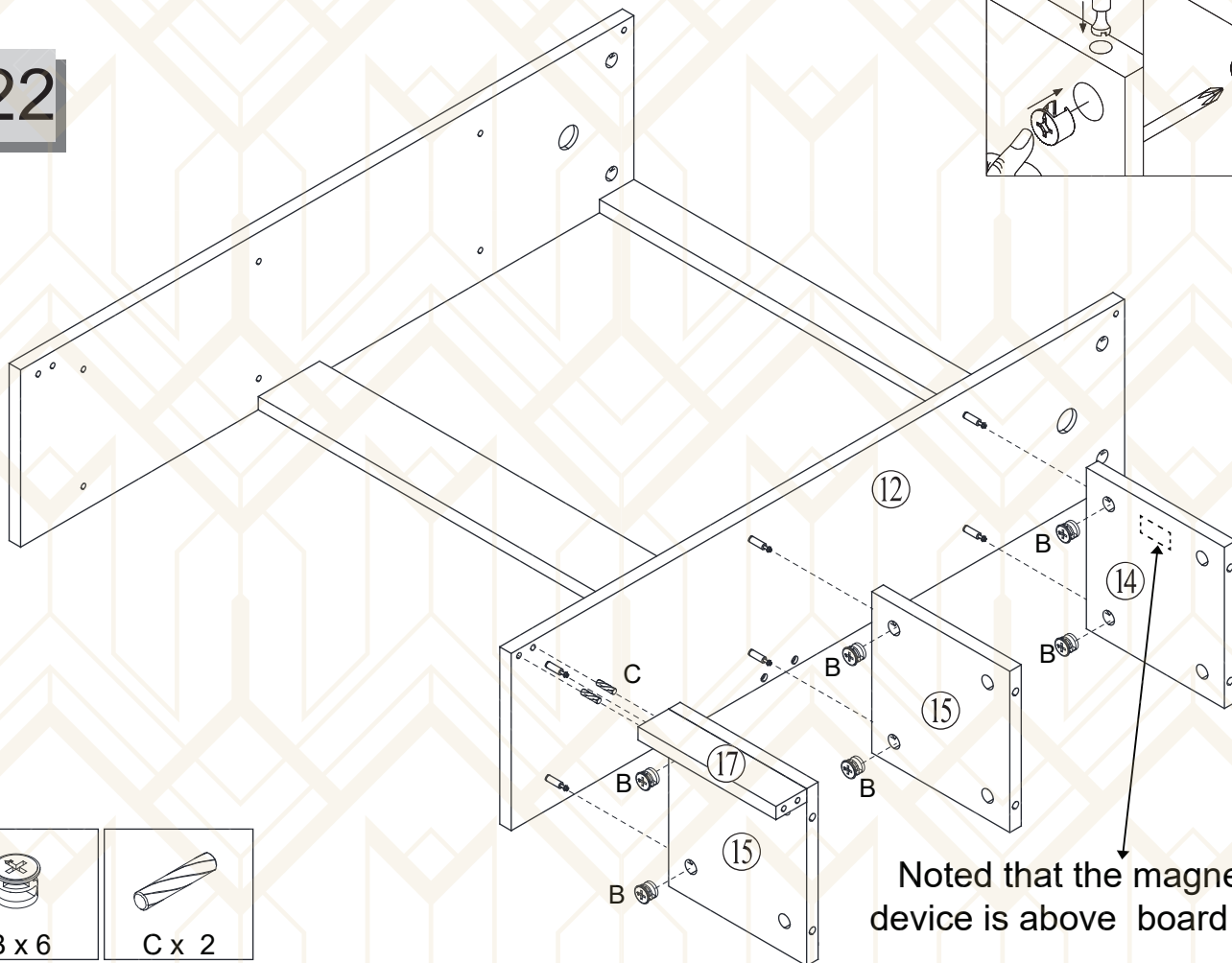
Now install ⑱ and ⑲ on ⑪, and then install ⑫ together with ⑱ and ⑲.



21



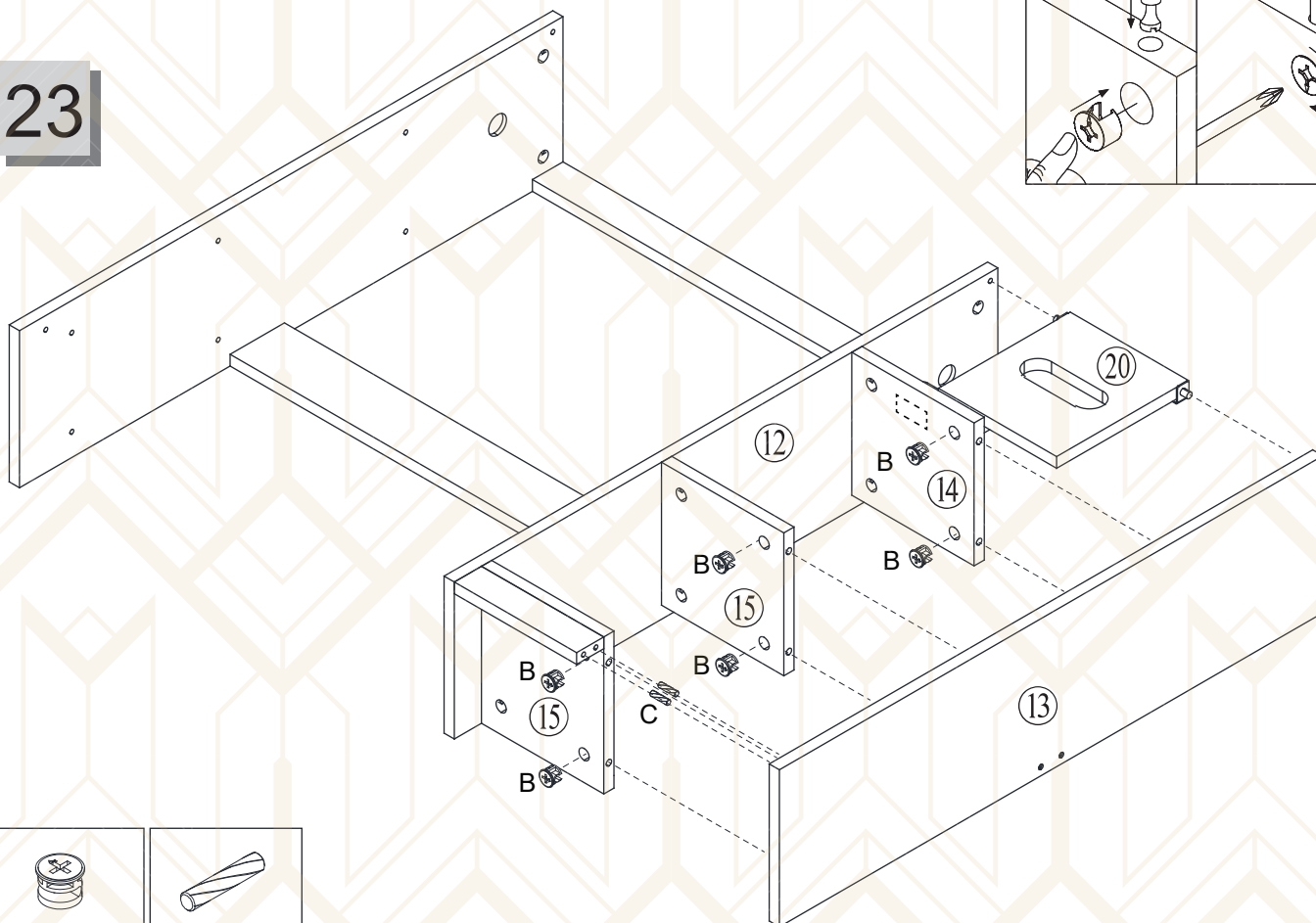
22

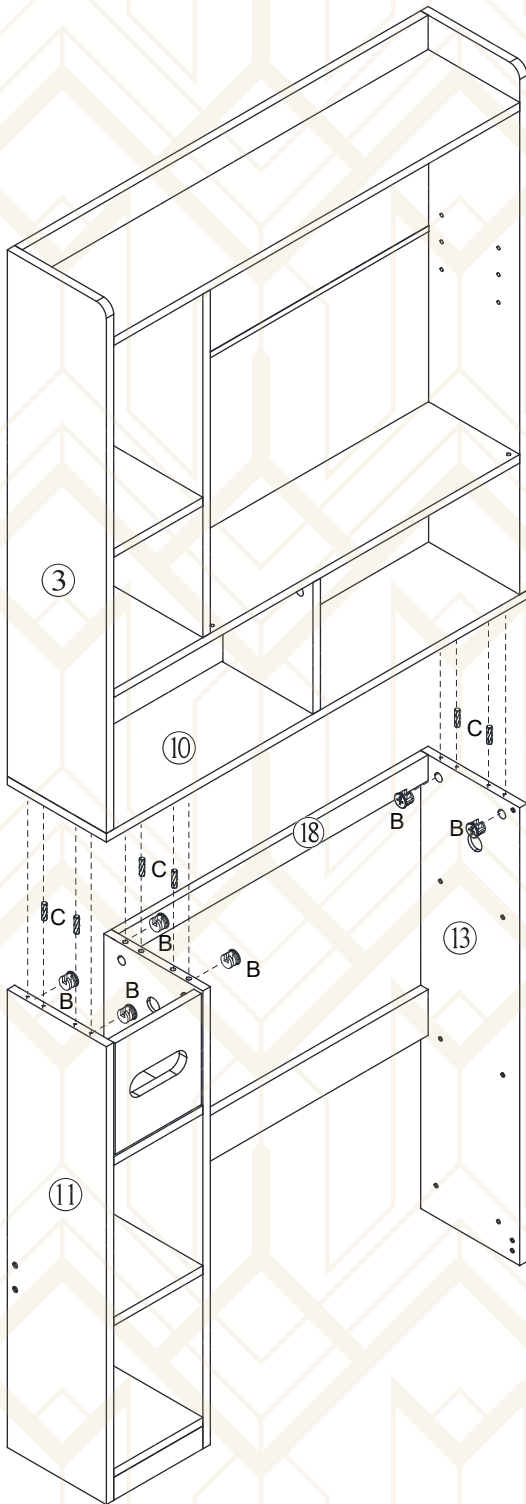
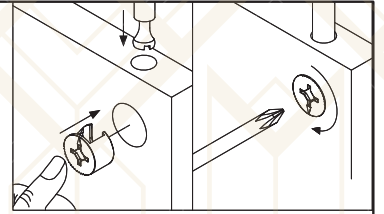


Noted that the magnetic device is above board 14

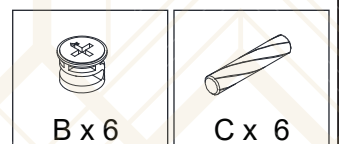
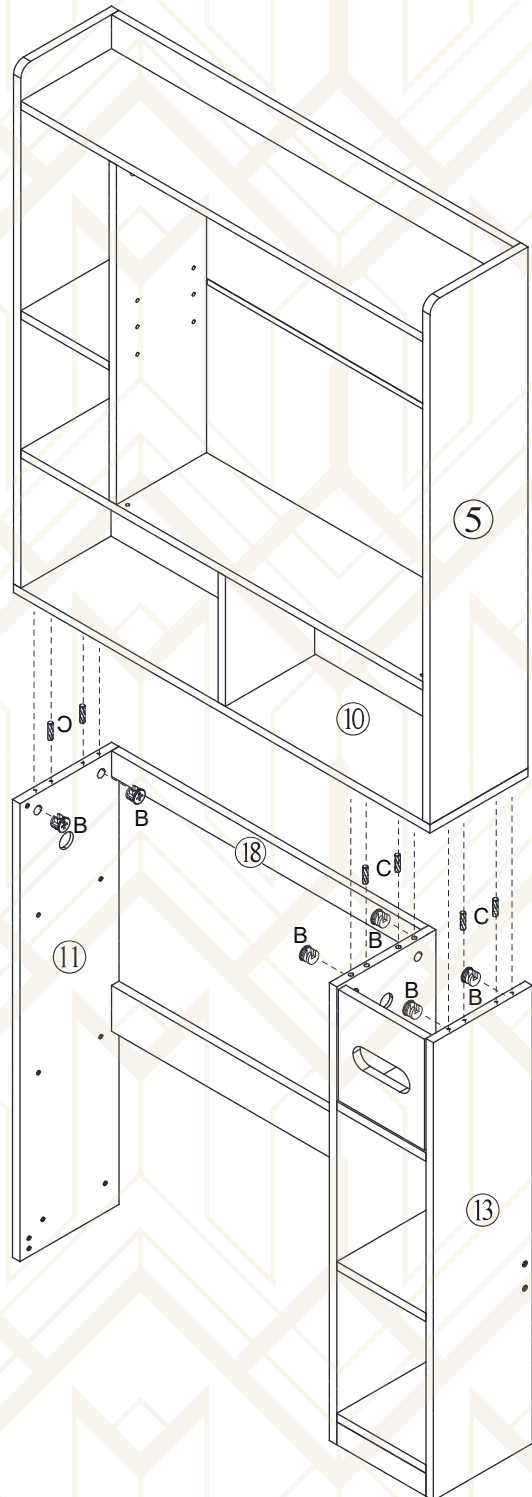


23

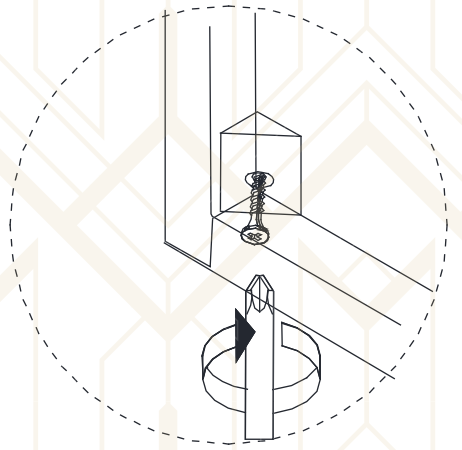
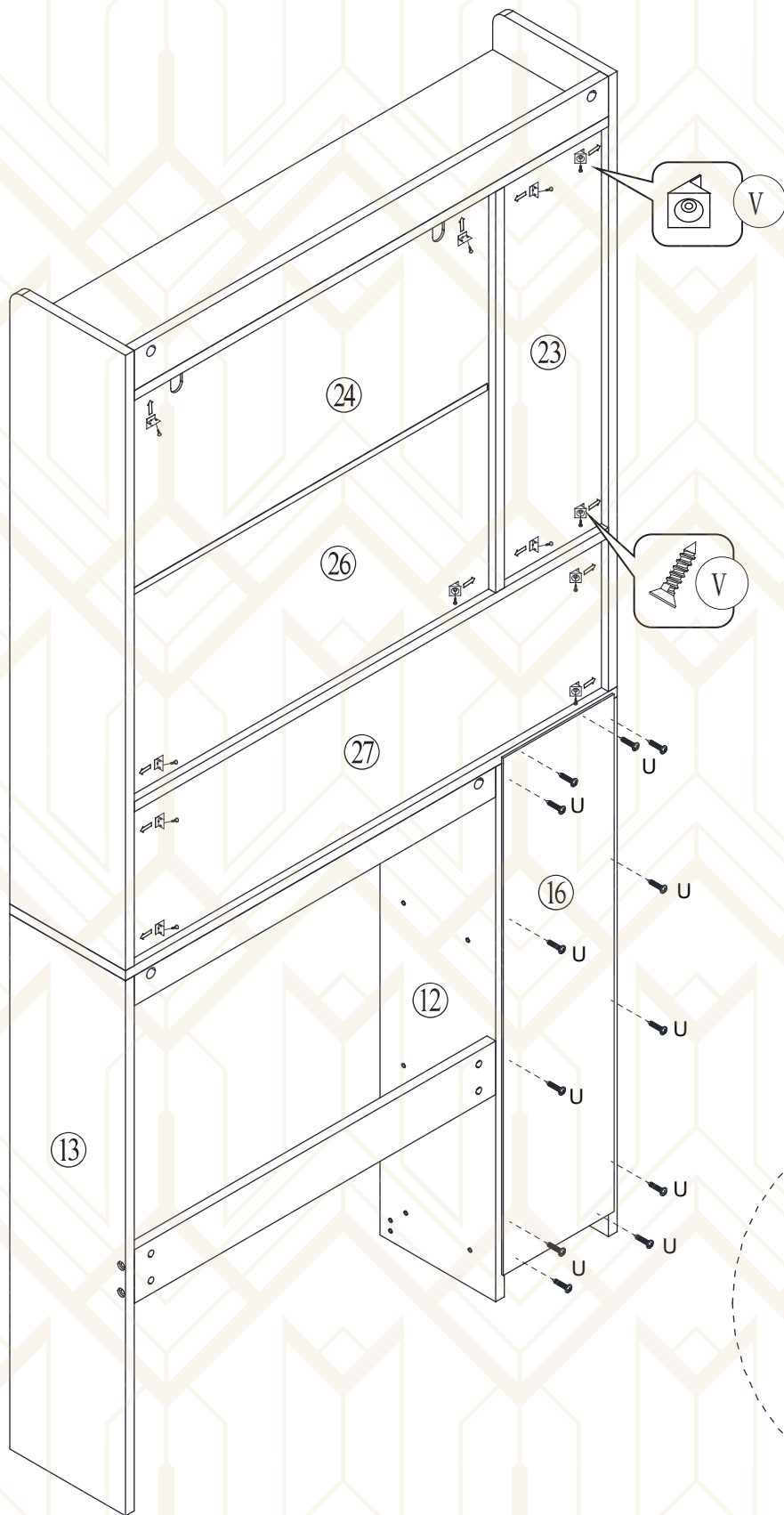




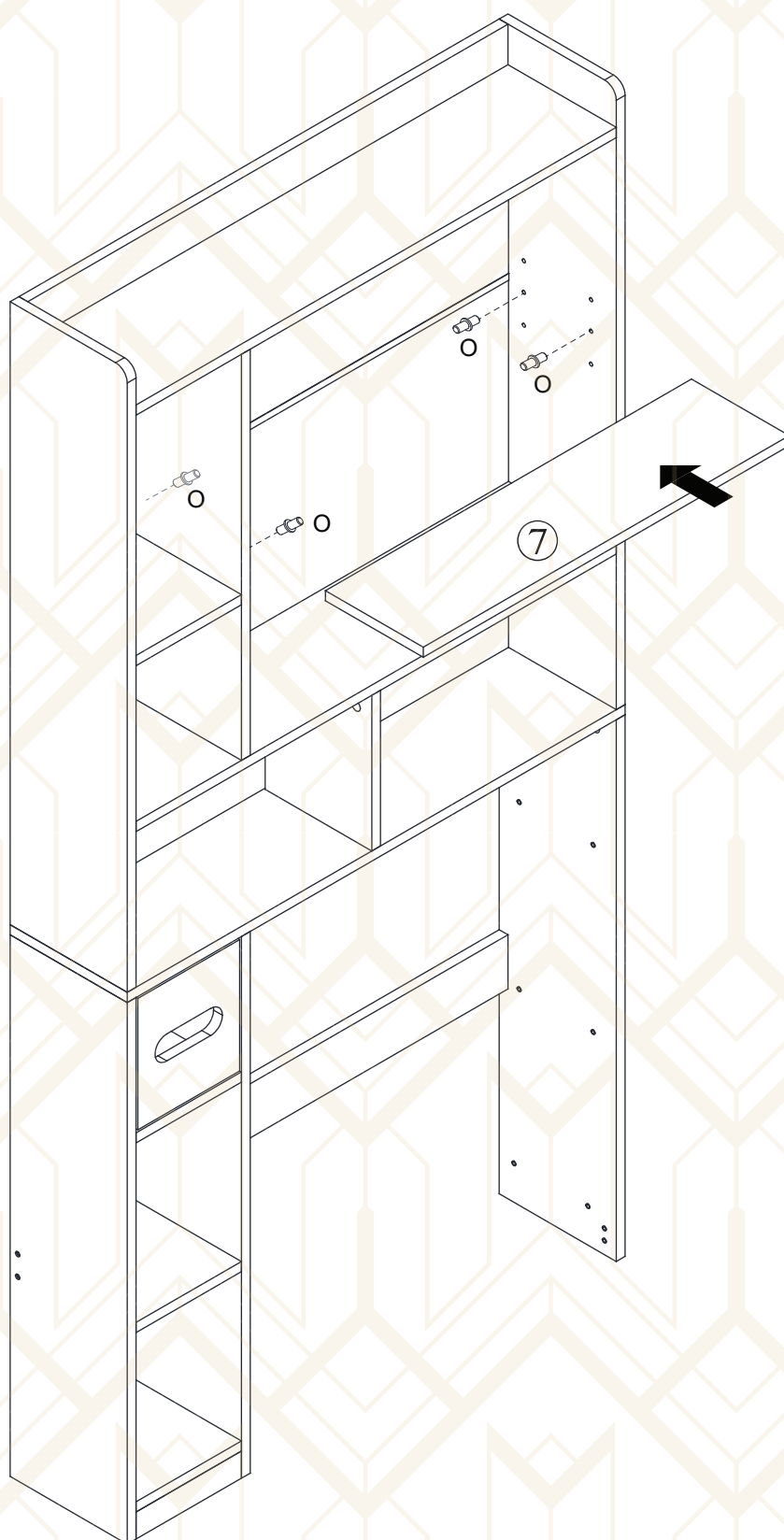
OR



25

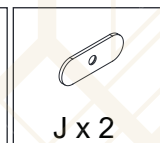
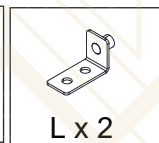
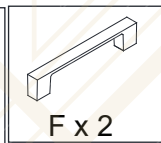
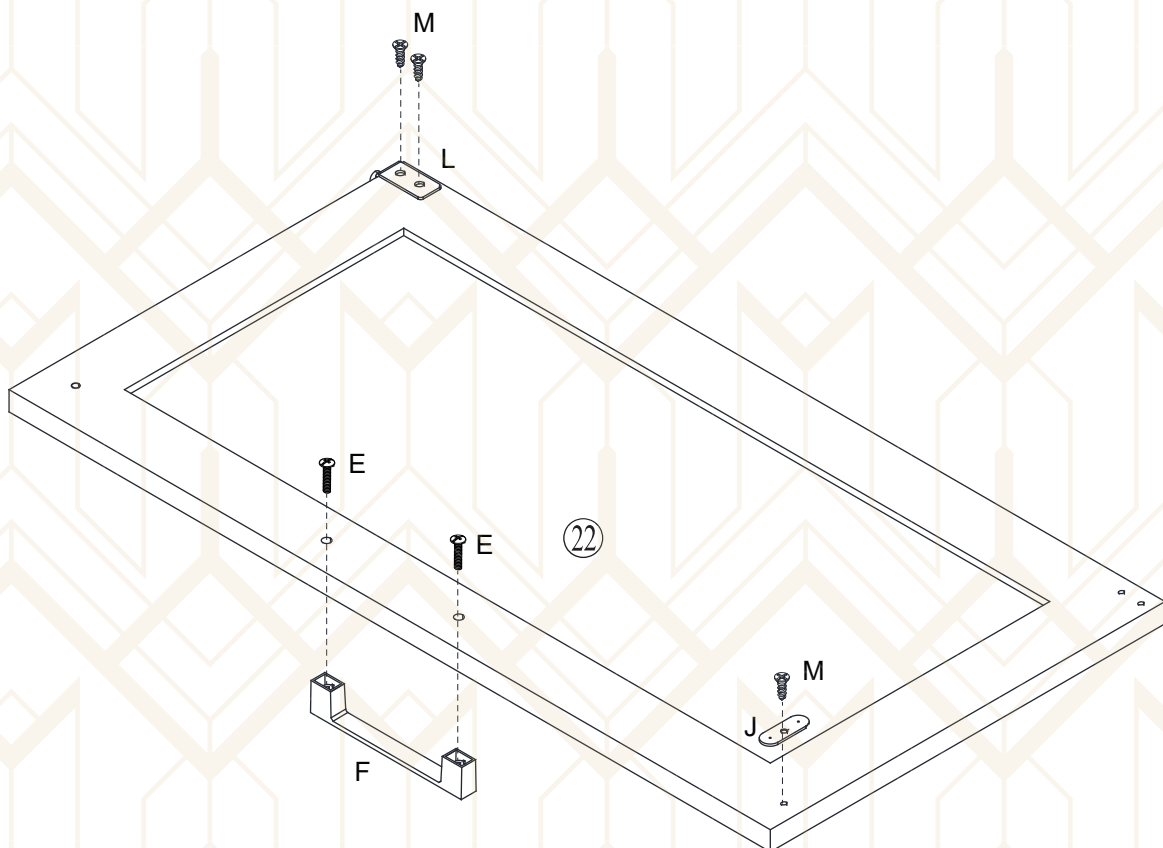
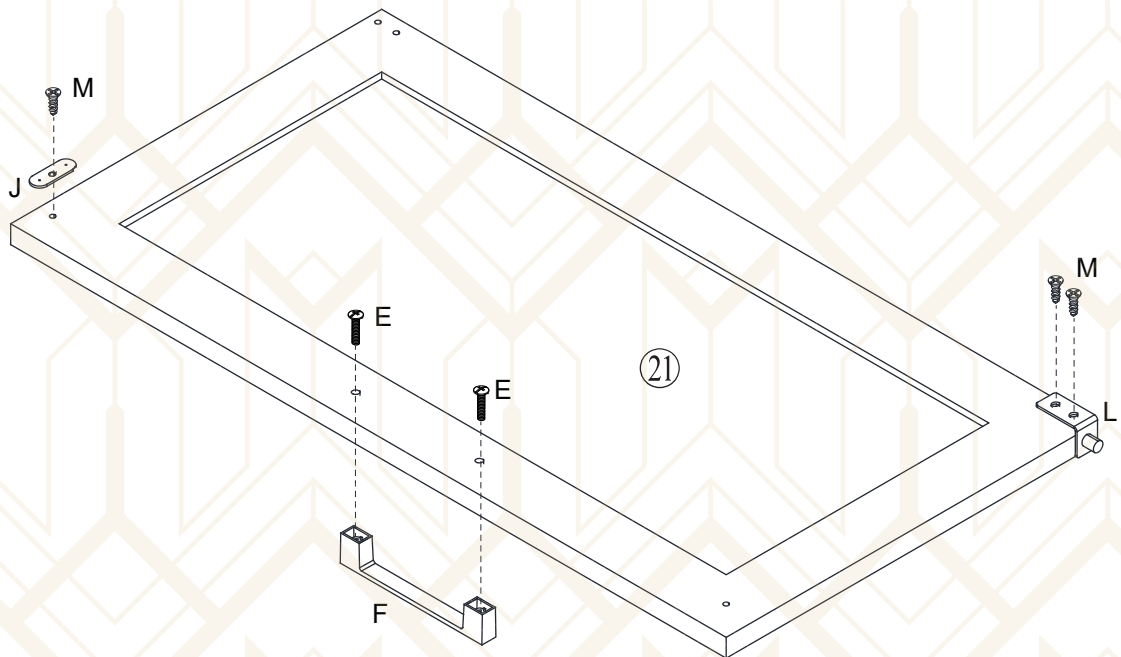


26



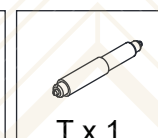
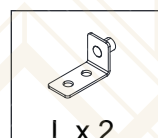
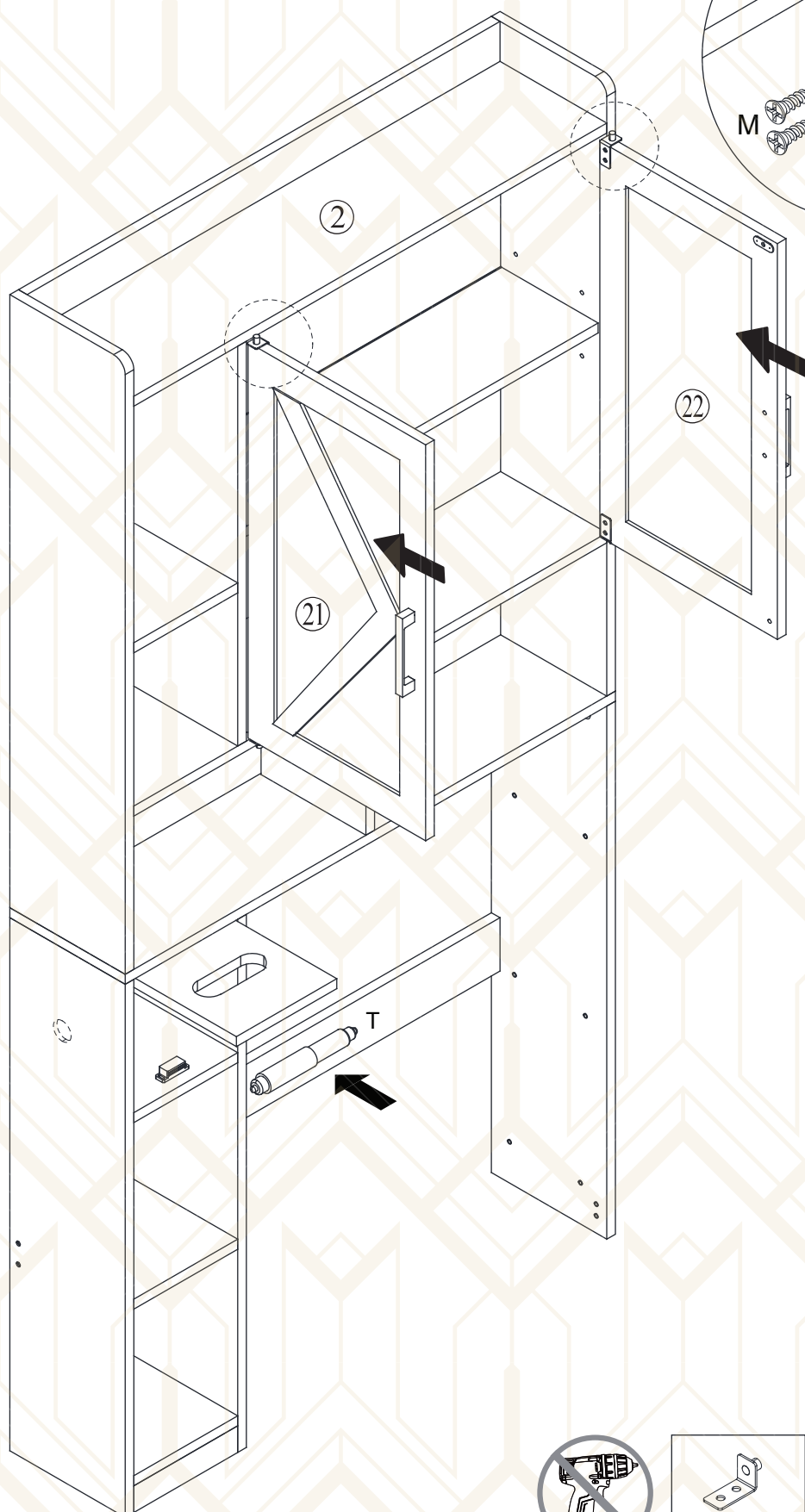
O x 4

27



28

Now align J with the reserved hole of board ②, and then use M to fix J with board ②① and ②②.

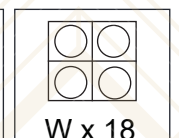
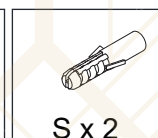
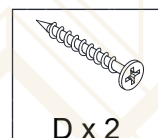


Step 1: Draw a positioning hole on the wall.

Step 2: Use 6mm drill bit to punch holes in the positioning points.

Step 3: Insert the S plastic parts into the positioning points.

Step 4: Use D screws through R and install with S screws.
(Note: Suggest 2 people to complete the step)





viroformo

VF-OT001-White / RBrown